



Deprivation at ward level

At a glance:

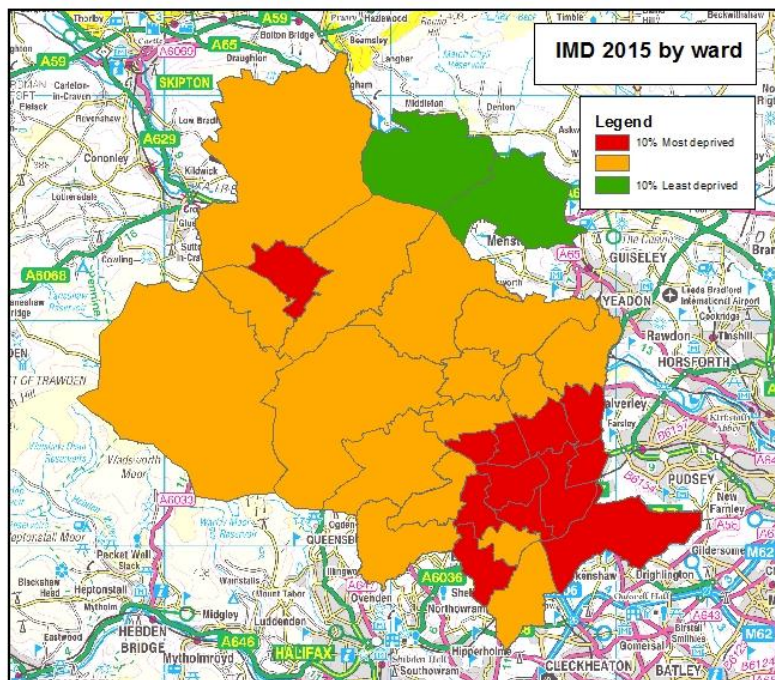
- Results for the Index of Multiple Deprivation 2015 show that 12 of the District's wards are amongst the 10% most deprived wards in England and two wards are amongst the 10% least deprived wards in England.
- Manningham is consistently the most deprived ward for most of the other indices and Wharfedale is consistently the least deprived ward for most of the other indices
- None of the District's wards falls with the 10% most deprived wards for barriers to housing and services

Introduction

The latest edition of the English Indices of Deprivation was published by the Department of Communities and Local Government on 30 September 2015 and updates the previous version published in 2010. The indices include the Index of Multiple Deprivation (IMD) 2015. Most of the data underpinning the IMD 2015 relates to 2012/13.

The indices are calculated using 37 separate indicators, organised across seven distinct domains of deprivation (income, employment, education skills and training, health deprivation and disability, crime, barriers to housing and services, and living environment) which are weighted and combined to calculate the Index of Multiple Deprivation 2015.

IMD 2015 is based on the small area geography of Lower Super Output Areas (LSOAs). These have been aggregated at ward level for this briefing note.



There are 30 wards in Bradford District, 476 wards in Yorkshire and Humberside region and 7,363 wards in England.

The map opposite identifies the wards which fall within the 10% most deprived in England (shown in red) and the 10% least deprived in England (shown in green).

Apart from Keighley Central ward, the other 10% most deprived wards are located in and around central Bradford.

The 10% least deprived wards are located in the Wharfe Valley.

Population by wards

The Indices of Deprivation data was produced at lower super output area (LSOA). The results have been aggregated at ward level for this report. The population range of Bradford wards varies between 11,850 people (Wharfedale) and 24,261 (City) and so caution is needed when making direct comparisons between wards.

Index of Multiple Deprivation

Results for the Index of Multiple Deprivation (IMD) 2015 reveal that Bradford District is ranked number 8 out of 36 metropolitan councils.

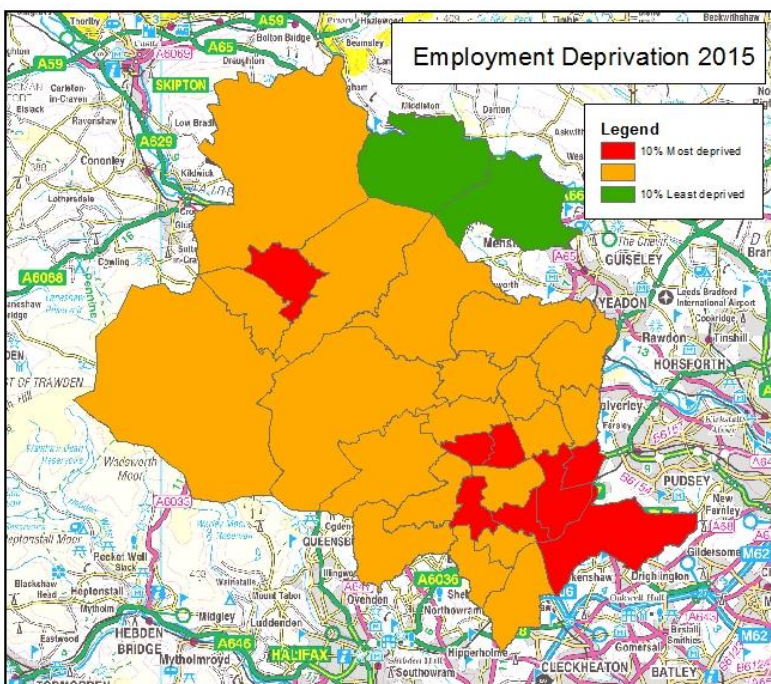
The map on page 1 highlights the wards which fall within 10% most and 10% least deprived in England. Bolton & Undercliffe, Bowling & Barkerend, Bradford Moor, City, Great Horton, Eccleshill, Little Horton, Keighley Central, Manningham, Royds, Toller and Tong wards comprise the 10% most deprived wards. Wharfedale and Ilkley wards comprise the 10% least deprived wards.

More about deprivation

The aggregated data provides a description of wards, but this description does not apply to every person living in those wards. Many non-deprived people live in deprived areas, and many deprived people live in non-deprived areas.

Employment deprivation

The employment domain which looks at employment deprivation makes up 22.5% of the overall Index of Multiple Deprivation. It measures the proportion of the working age population in an area who are involuntarily excluded from the labour market. This includes people who would like to work but are unable to do so due to unemployment, sickness or disability, or caring responsibilities.



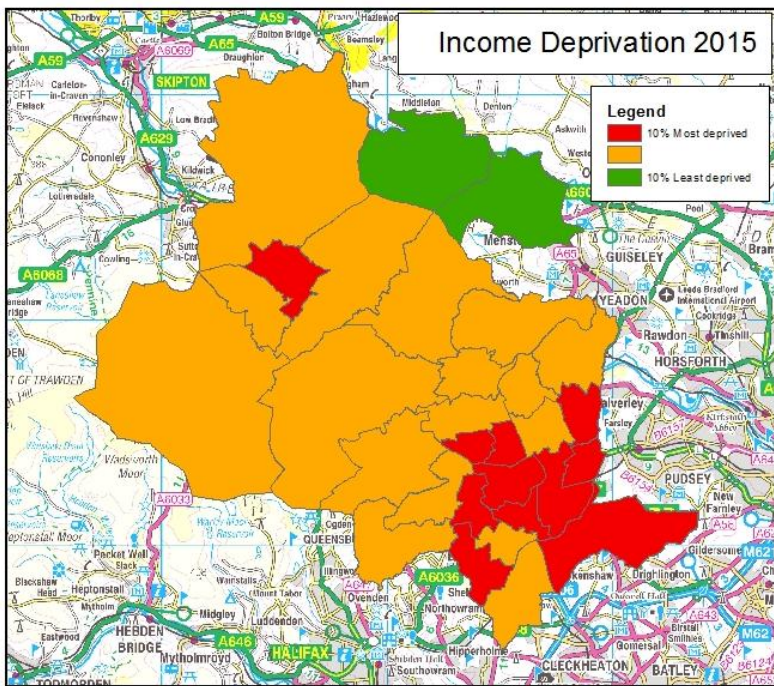
Bradford District ranks 6th most employment deprived local authority in terms of Rank of Employment Scale in England – this measures the actual number of people experiencing employment deprivation and is the same position as in 2010.

Manningham is the most deprived ward and Wharfedale ward is the least deprived in the District.

Manningham, Little Horton, Bowling & Barkerend, Tong, Keighley Central, Toller, Bradford Moor and Great Horton wards are in the 10% most deprived wards in England. Wharfedale and Ilkley are in the 10% least deprived wards in England.

Income deprivation

The income domain which looks at income deprivation makes up 22.5% of the overall Index of Multiple Deprivation. It measures the proportion of the population experiencing deprivation related to low income. The definition of low income which is used includes both people who are out-of-work and those that are in work, but have low earnings (and satisfy the respective means test).



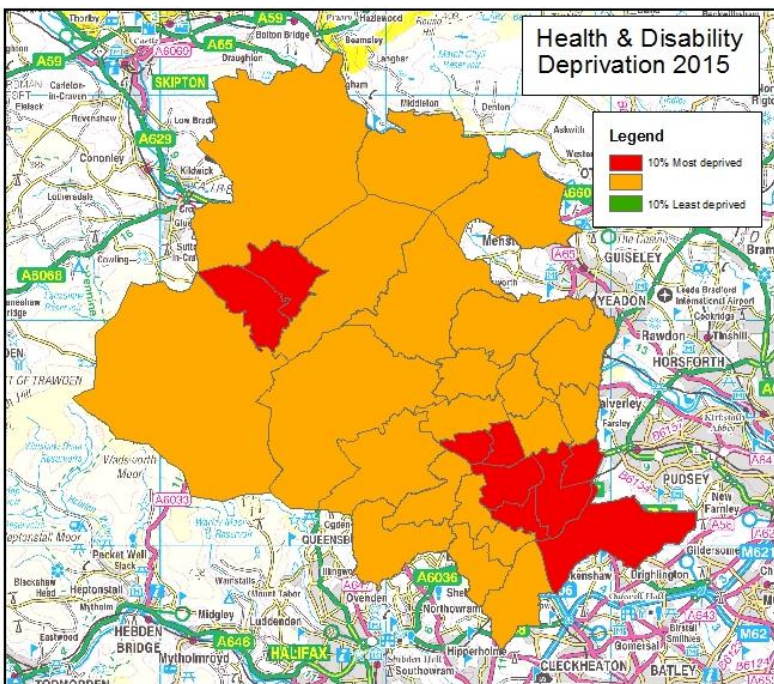
Bradford District ranks 5th most income deprived local authority in terms of Rank of Income Scale in England – this measures the actual number of people experiencing income deprivation and is the same position as in IMD 2010.

Manningham is the most deprived ward and Wharfedale ward is the least deprived in the District.

Although the results for income deprivation are very similar to employment deprivation – there are an additional three wards which fall within the 10% most deprived – City, Eccleshill and Royds. Wharfedale and Ilkley are in the 10% least deprived wards.

Income deprivation affecting children and older people

ONS has published two supplementary indicators which examine income deprivation affecting children and older people. These do not add any weight to the overall Index of Multiple Deprivation. The results reflect the overall income deprivation results with higher rates of income deprivation seen around the city and Keighley Central. Lower levels of deprivation are seen to the north of the district – particularly in Wharfedale.



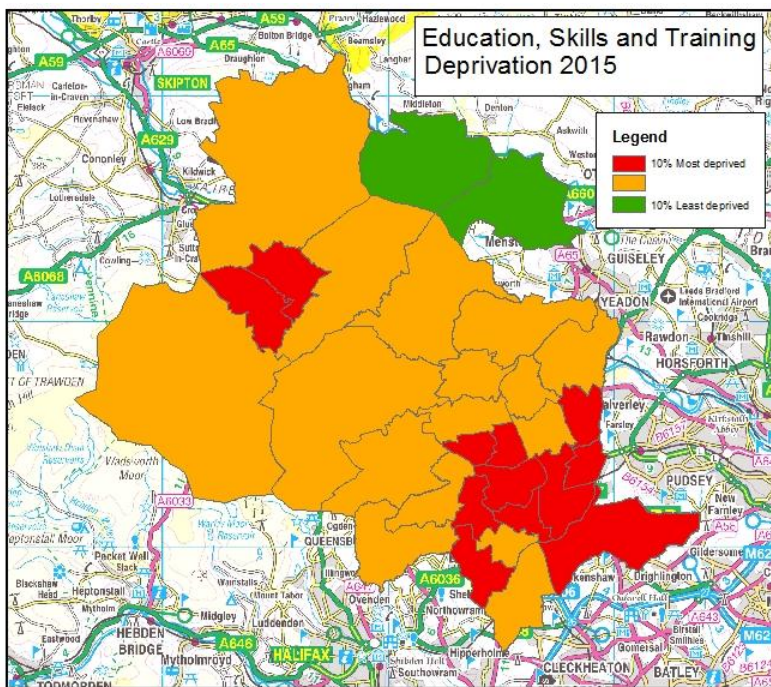
Health and disability

The Health and Disability domain is based on the proportion of the population experiencing deprivation as a result of poor health and disability. The domain makes up 13.5% of the overall Index of Multiple Deprivation and measures the risk of premature death and the impairment of quality of life through poor physical or mental health.

The 10% most deprived wards in England are located in and around Bradford City Centre and Keighley town centre. Manningham ward is the most deprived followed by Bowling & Barkerend, Tong, Keighley Central, Bradford Moor, Little Horton, City, Toller and

Keighley West. There are no wards in the 10% least deprived in England.

Education, skills and training

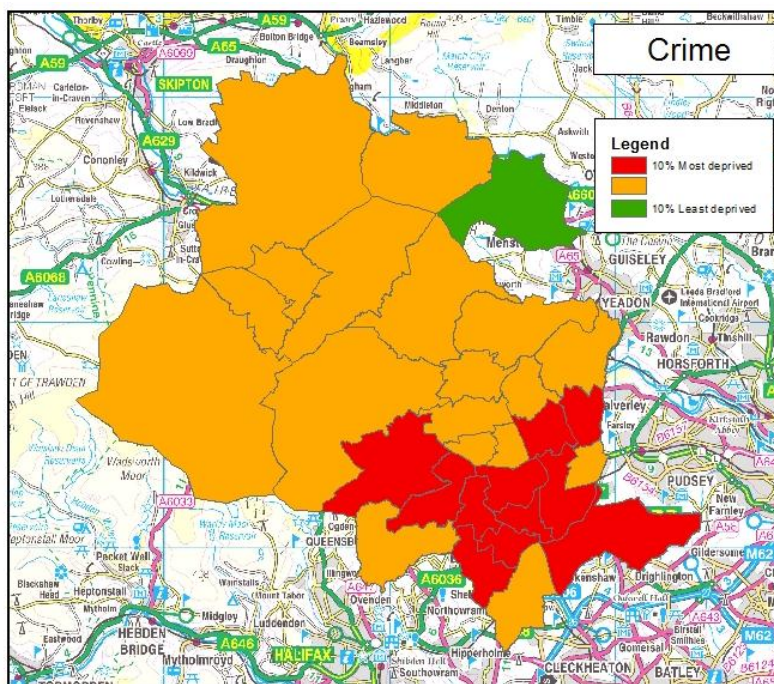


The Education, Skills and Training Domain measures the lack of attainment and skills in the local population and makes up 13.5% of the overall Index of Multiple Deprivation.

The 10% most deprived wards in England are located in and around Bradford City Centre and Keighley town centre. Manningham ward is the most deprived followed by Little Horton, Bradford Moor, Bowling & Barkerend, Tong, Keighley Central, Toller, Eccleshill, Great Horton, City Royds and Keighley West.

Wharfedale and Ilkley wards are within the 10% least deprived wards in England.

Crime



The Crime Domain measures the risk of personal and material victimisation at a local level. This domain makes up 9.3% of the overall Index of Multiple Deprivation. The domain is comprised of the rate of recorded crime for four major crime types: burglary, theft, criminal damage and violence.

The 10% most deprived wards are in Bradford city centre and surrounding urban wards. Eccleshill is the most deprived ward followed by Wibsey, Tong, Great Horton, Bolton & Undercliffe, Clayton & Fairweather Green, Royds, Bowling & Barkerend, Little Horton, City and Thornton & Allerton.

Wharfedale ward is the least deprived ward and the only ward in the District that is classed as one of the 10% least deprived in England for the crime domain.

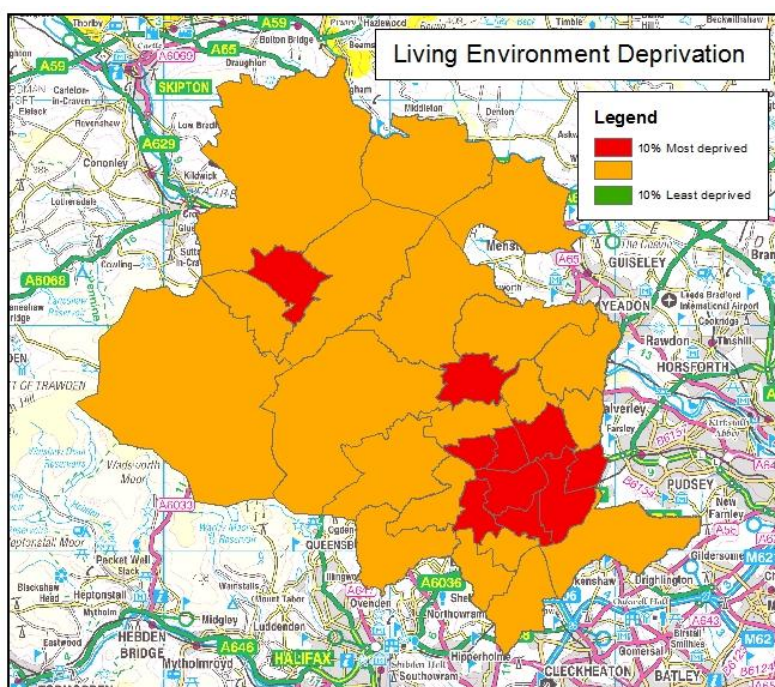
Barriers to Housing and Services

The Barriers to Housing and Services domain is split into two main sections: the 'Geographical Barriers' which include the actual position of services (road distance to a post office, primary school, general store or supermarket and GP surgery) and the 'Wider Barriers' which include economic aspects such as the affordability of housing. This comprises 9.3% of the IMD index.

There are no wards that are within the 10% most deprived in England and only Shipley ward is classed as being within the 10% least deprived wards in England for the Barriers to Housing and Services domain.

Living Environment

The Living Environment Domain looks at the environmental quality of the area. This domain makes up 9.3% of the total IMD measurement. There are two areas that comprise the measurement – the 'indoor' and 'outdoor' environment. The 'indoor' includes factors that affect the quality of the housing and the 'outdoor' includes factors such as air quality and safety on the roads.



Manningham ward is the most deprived, followed by City, Bradford Moor, Keighley Central, Bowling & Barkerend, Toller, Bolton & Undercliffe, Little Horton, Shipley and Great Horton.

Bradford has no wards which are classed as being in the 10% least deprived in England.

Data sources and further information

Source: Office for National Statistics, Local Government Inform Plus

Link: www.ond.gov.uk www.lgiu.org.uk

City of Bradford MDC

www.bradford.gov.uk

Contact: Catriona Colborn

Email: catriona.colborn@bradford.gov.uk Telephone: 01274 434691

Office of the Chief Executive,

City of Bradford Metropolitan District Council,

3rd Floor, Margaret McMillan Tower, Princes Way, Bradford, BD1 1NN

ubd.bradford.gov.uk

Unless marked otherwise, you are free to use the content of this bulletin in your own work as long as you quote the source.

The wording in this publication can be made available in other formats such as large print. Please call 01274 434691