



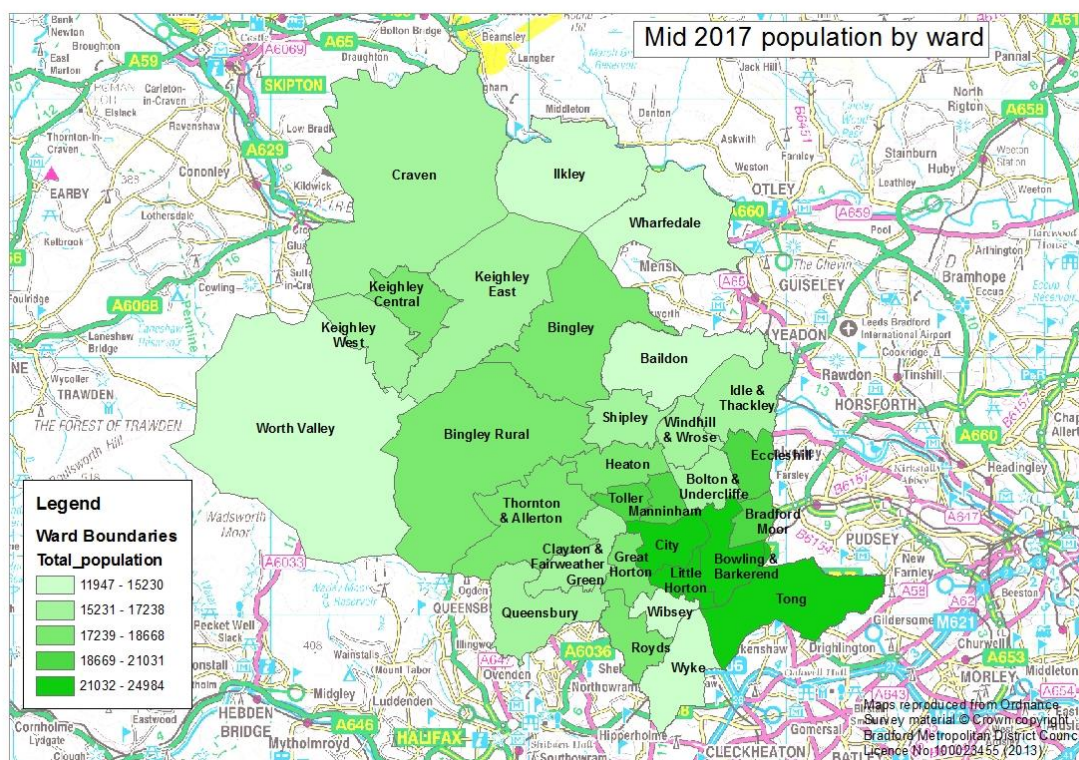
Ward population update

At a glance:

- Bradford's population increased by 2,300 (0.4%) people between 2016 and 2017
- City ward experienced the largest population increase (430 more people) between 2016 and 2017 and Thornton and Allerton ward experienced the largest population decrease (182 fewer people)
- City ward has the largest population (25,000 people)
- Wharfedale ward has the smallest population (11,950 people)
- Little Horton has the highest proportion (33.4%) of children aged 0 – 15
- City ward has the highest proportion of people of working age (72.7%)
- Craven ward has the highest proportion of older people aged 65 – 84 (22.4%) and Ilkley has the highest proportion of very old people aged 85+ (6%)

Introduction

The most recent population estimates for the District as a whole were published on 28 June 2018 and show that the District's population had increased from 2016 to 2017 by 2,300 people to 534,800. This growth was driven by "natural change" – there were more births than deaths, but this total was significantly reduced by more people leaving Bradford for other parts of the country than coming to live here. The Government's Office for National Statistics has now revised the historic population mid-year estimates from 2012 to 2016 and the revised data is used in this update.



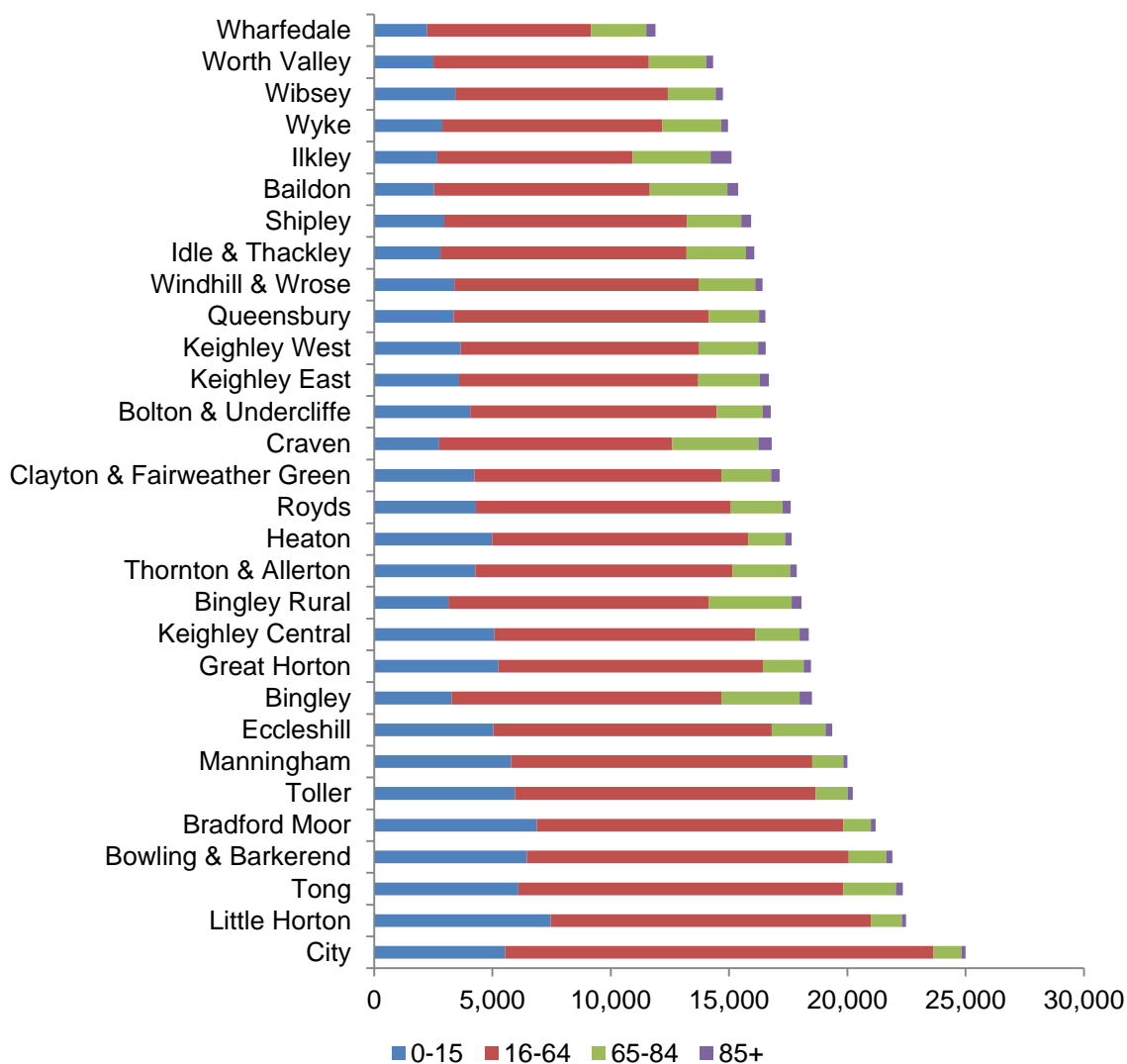
The population estimates at ward level were published on 26 October 2018 and show that the wards with the highest population totals (shown in dark green) are generally concentrated in and around the centre of Bradford and the areas with the smaller population totals (shown in pale green) are generally located in the outer rural areas.

City ward has highest population total with 24,980 people followed by Little Horton with 22,590 people and Tong with 22,560 people. Wharfedale ward has the smallest population with 11,950 people followed by Worth Valley with 14,230 people and Wibsey with 14,860 people.

Trends in ward data by age group

The wards with the highest numbers of children and young people aged 0 – 15 are generally found in and around central Bradford.

Ward population by age group



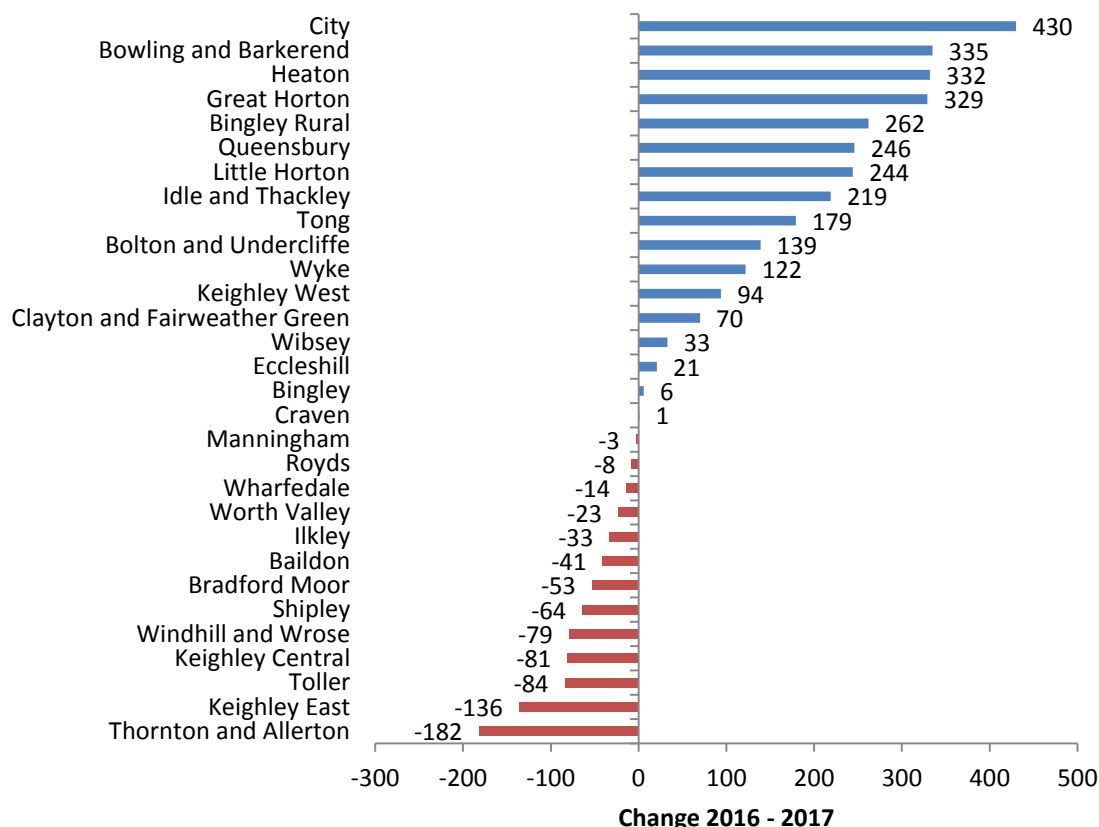
More than one-third (33.4%) of the population of Little Horton comprises the 0 – 15 population, followed by Bradford Moor (32.3%) and Bowling & Barkerend (29.7%). Craven ward has the lowest proportion (16.4%) followed by Baildon (16.9%) and Worth Valley (17.3%).

City ward has the highest proportion of the working age population (72.7%) followed by Queensbury (64.6%) and Shipley (64%). Ilkley has the lowest proportion (54.4%) followed by Wharfedale (57%) and Craven (57.8%).

Craven ward has the highest proportion of 65 – 84 age group (22.4%) followed by Ilkley (21.9%) and Baildon (21%). City has the lowest proportion (4.7%) followed by Bradford Moor (5.7%) and Little Horton (5.9%). Ilkley has the highest proportion of the 85+ very elderly age group (6%) followed by Wharfedale (3.6%) and Craven (3.4%). City has the lowest proportion (0.6%) followed by Bradford Moor and Little Horton (0.8%) each.

Trends in population data by ward

In the last year City ward experienced the largest population increase of 430 people (1.75%), followed by Bowling & Barkerend ward (335 people) and Heaton ward (332 people). At the other end of the scale Thornton & Allerton experienced the largest population decrease of 182 people (-0.82%) followed by Keighley East (-136 people) and Toller (-84 people).



Data sources and further information

Source: Office for National Statistics

Link: <https://www.ons.gov.uk/releases/smallareapopulationestimatesinenglandandwalesmid2017>



Contact: Catriona Colborn

Email: catriona.colborn@bradford.gov.uk Telephone: 01274 434691

Office of the Chief Executive,

City of Bradford Metropolitan District Council,

3rd Floor, Margaret McMillan Tower, Princes way, Bradford, BD1 1NN

ubd.bradford.gov.uk

The wording in this publication can be made available in other formats such as large print. Please call 01274 434691