



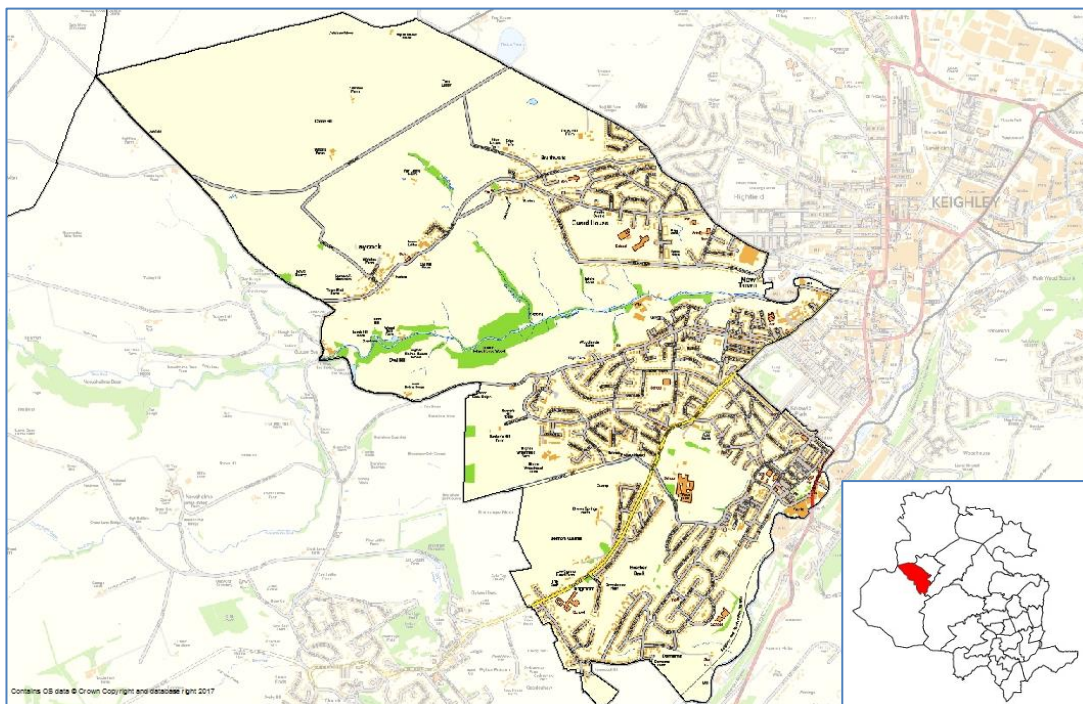
Ward Profile – Keighley West

At a glance:

- Keighley West has a total population of 16,630 people
- 1.5% of homes in Keighley West are empty on a long-term basis and 4.1% are overcrowded both are lower than the District average
- Keighley West has a lower life expectancy rate for males and a higher life expectancy rate for females than the District average
- Keighley West is ranked 13th of 30 wards in the District for the 2015 Index of Multiple Deprivation where 1 is the most deprived (Manningham ward) and 30 is the least deprived (Wharfedale)

Introduction

Keighley West ward is one of six wards in the Keighley area. It stretches from the town centre southwards and westwards where it borders the Worth Valley. It contains the areas of Braithwaite, Guardhouse, Laycock, Fell Lane, Exley Head, Bogthorn, Ingrow and Bracken Bank.



Population

The latest population estimates for mid-2017 show that 16,630 people live in Keighley West ward. 22.2% of the population is aged under 16 (Craven has the lowest percentage of young people with 16.4% and Little Horton has the highest percentage with 33.4%).

60.7% of the ward's population is aged between 16 and 64. Ilkley has the lowest percentage of the working age population with 54.4% and City has the highest percentage with 72.7% - this probably reflects the high numbers of students and young people living in the areas close to Bradford College and Bradford University.

15.1% of the population of Keighley West ward is aged 65 to 84. City ward has the lowest percentage with 4.7% and Craven has the highest percentage with 22.4%.

2.0% of Keighley West ward's population is aged 85 and over. City ward has the lowest percentage with 0.6% and Ilkley has the highest percentage with 6%.

Ethnicity and religion

Ethnicity	Percentage
White	92.3%
Multiple/mixed ethnic groups	1.7%
Indian	0.4%
Pakistani	2.8%
Bangladeshi	1.2%
Other Asian	0.7%
Black	0.8%
Other ethnic group	0.2%

Toller ward has the lowest percentage of the White population (14.3%) and the highest percentage of the Pakistani population (72.3%). Wharfedale has the highest percentage of the White population (98.1%) and the lowest percentage of the Pakistani population (0.2%).

Religion	Percentage
Christian	60.0%
Buddhist	0.2%
Hindu	0.1%
Jewish	0.1%
Muslim	4.5%
Sikh	0.1%
Other religion	0.3%
No religion	28.4%
Religion not stated	6.2%

The question about religion in the 2011 census was voluntary and 6.2% of the Keighley West ward population chose not to answer.

Manningham has the lowest percentage of Christians (12.7%) and Craven ward has the highest percentage

(67.5%). Ilkley and Wharfedale both have an equal low percentage of Muslims (0.3%) and Toller has the highest percentage (76.1%).

Toller has the lowest percentage of people who do not have a religion (3.4%) and Eccleshill has the highest percentage (31.4%). Great Horton has the lowest percentage of people who chose not to answer the question about religion (5.3%) and Ilkley has the highest percentage (7.6%).

Housing

There are 7,413 homes in Keighley West ward of which 1.5% are long-term empty, this is lower than the District average of 2%.

45.7% of homes in Keighley West ward are semi-detached, 35.6% are terraced, 10% are detached and 8.7% are flats.

City ward has the lowest percentages of detached and semi-detached homes Baildon has the lowest percentages of terraced homes. Queensbury ward has the lowest percentages of flats.

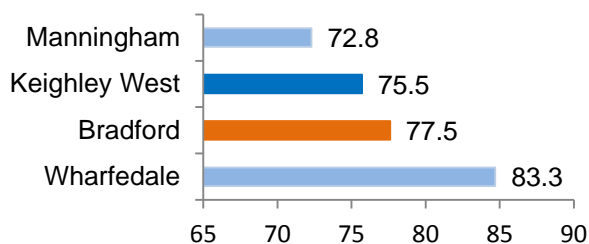
City ward has the highest percentages of flats. Eccleshill has the highest percentage of semi-detached homes and Bradford Moor has the highest percentage of terraced properties.

4.1% of households in Keighley West ward are living in overcrowded homes which is lower than the District average of 6.2%. Wharfedale ward had the lowest rate in the District with 1.2%. Manningham had the highest rate at 17.8%

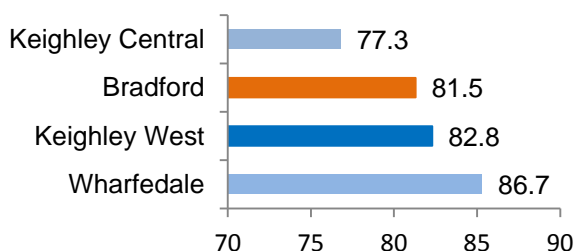
Life expectancy

In 2014-16 life expectancy at birth for males living in Keighley West ward was lower than the District average and the life expectancy for females living in Keighley West ward was higher than the District average. Manningham ward had the lowest life expectancy rate for males and Keighley Central ward had the lowest life expectancy rate for females.

Life expectancy - males

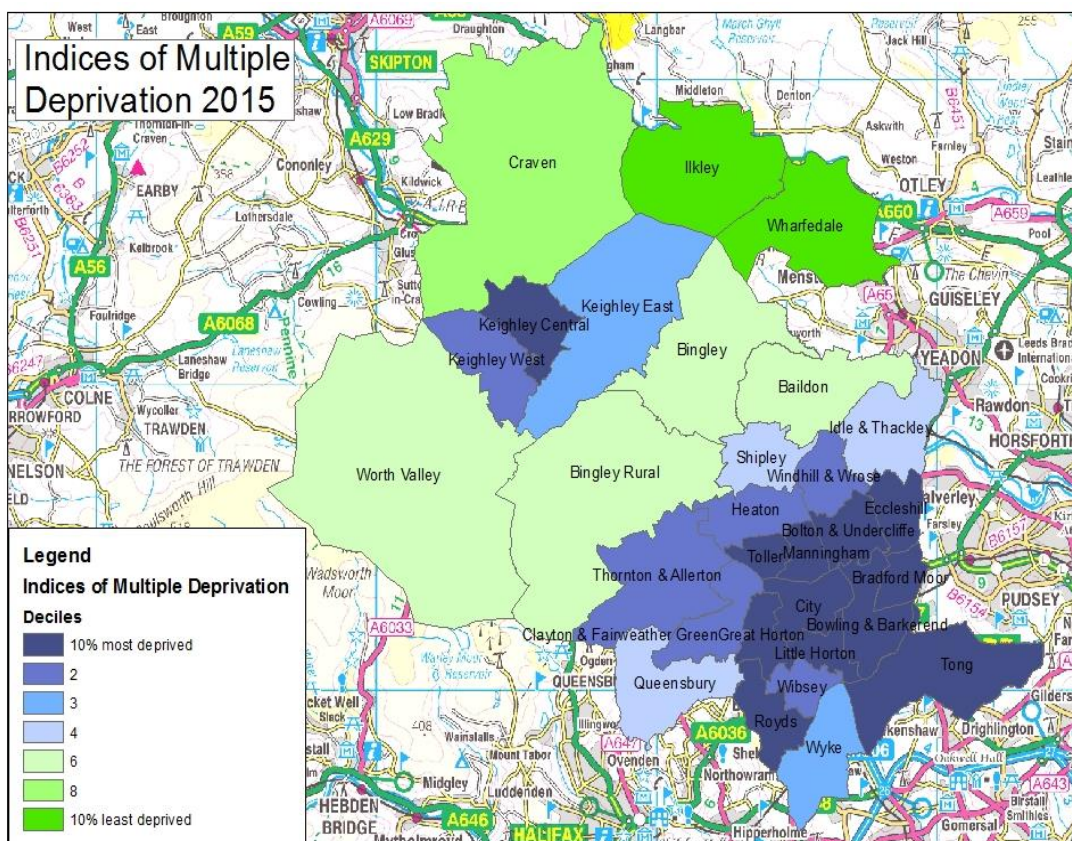


Life expectancy - females



Deprivation

The following map shows wards in Bradford District ranked by deciles of deprivation. Wards which are identified as being more deprived are shown in blue and wards identified as being less deprived are shown in green.



The Indices of Deprivation 2015 were published in September 2015 at district and lower layer super output area. The indices are calculated using 37 separate indicators, organised across seven distinct domains of deprivation (income, employment, education skills and training, health deprivation and disability, crime, barriers to housing and services and living environment) which are weighted and combined to calculate the Index of Multiple Deprivation 2015.

The results have now been aggregated to ward level and this shows that 12 of the District's wards are amongst the 10% most deprived wards in England and two wards are amongst the 10% least deprived wards in England. Manningham is consistently the most deprived ward for most of the indices and Wharfedale is consistently the least deprived ward for most of the indices.

Keighley West ward is ranked 13th out of 30 wards where 1 is the most deprived and 30 is the least deprived. Keighley West ward is in 13th place for income deprivation, 11th place for employment deprivation and 12th place for education, skills and training deprivation.

More about deprivation

The data about deprivation has been aggregated to ward level. Although this data provides a description of the District's wards, this description does not apply to every person who lives there. Many non-deprived people live in deprived areas, and many deprived people live in non-deprived areas.

Data sources and further information

Source: 2011 Census, Mid-year population estimates, Indices of Deprivation 2015

Link: www.ons.gov.uk www.nomisweb.co.uk

For more information about population and deprivation at ward level see:

<https://ubd.bradford.gov.uk/>

Contact: Catriona Colborn
Email: catriona.colborn@bradford.gov.uk
Telephone: 01274 434691

Office of the Chief Executive,
City of Bradford Metropolitan District Council,
3rd Floor, Margaret McMillan Tower, Princes Way, Bradford, BD1 1NN
ubd.bradford.gov.uk



Unless marked otherwise, you are free to use the content of this bulletin in your own work as long as you quote the source.

The wording in this publication can be made available in other formats such as large print. Please call 01274 434691