



Indices of Deprivation 2019

At a glance:

- Bradford is the 13th most deprived local authority in England
- Bradford's position has worsened by six places since IMD 2015
- Bradford is the 5th most income deprived and 6th most employment deprived local authority in England (the same as in 2015 and 2010).
- More than one-third (34%) of Bradford's 310 neighbourhoods fall within the 10% most deprived in England (an additional three neighbourhoods since 2015)

Introduction

The latest edition of the English Indices of Deprivation was published by the Ministry of Housing, Communities and Local Government on 26 September 2019. The Indices measure relative levels of deprivation in the 32,844 Lower-layer Super Output Areas (LSOAs) or neighbourhoods in England. Bradford has 310 LSOAs.

How the index of multiple deprivation (IMD) is calculated

The Index of Multiple Deprivation is an overall measure of deprivation and uses 39 separate indicators organised across seven distinct domains of deprivation (income, employment, education skills and training, health deprivation and disability, crime, barriers to housing and services and living environment) which are combined and weighted.

What this means for Bradford

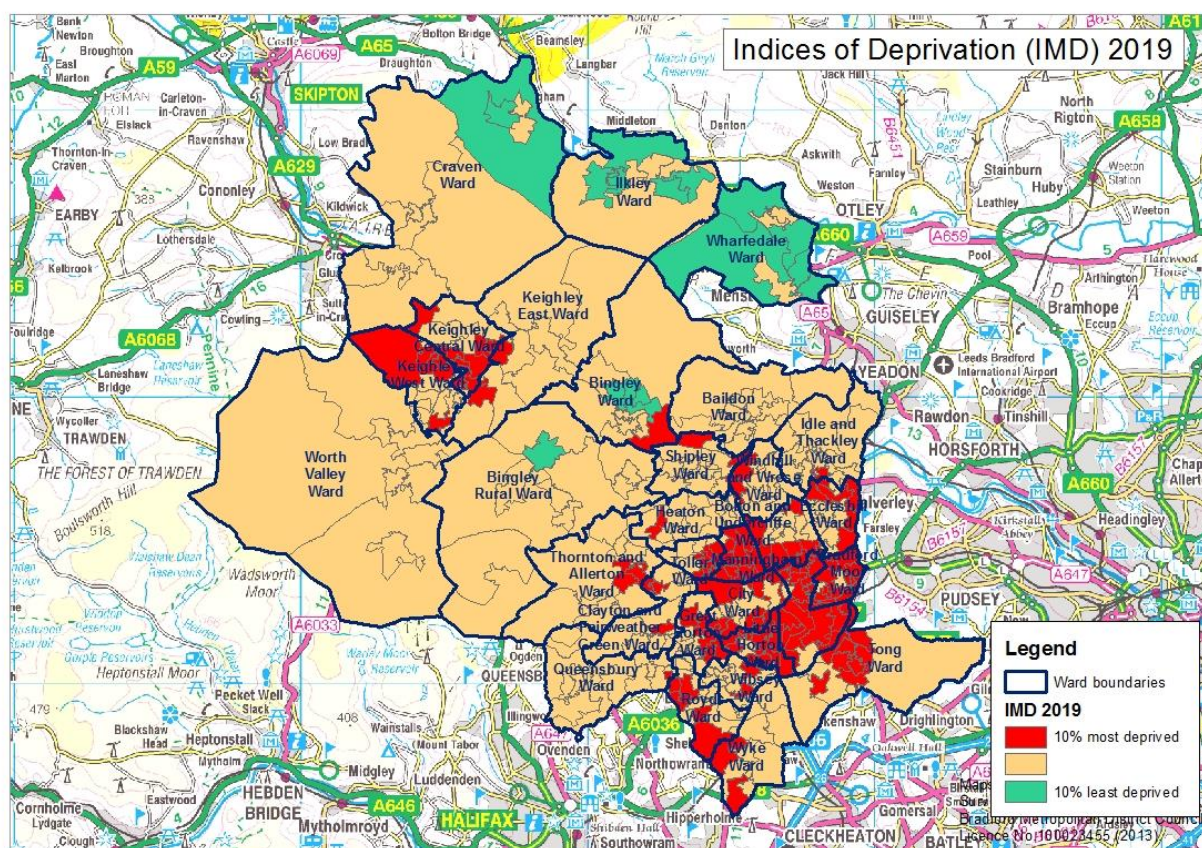
Bradford ranks the 13th most deprived local authority in England (where 1 is the most deprived local authority and 317 is the least deprived) and 2nd most deprived in the Yorkshire and Humber region (after Kingston Upon Hull).

Bradford's position, relative to other local authorities has worsened in the last nine years. In 2015 Bradford was ranked as 19th most deprived and in 2010 Bradford was ranked 26th most deprived.

Bradford is ranked the 5th most income deprived local authority in terms of Rank of Income Scale in England. This measures the actual number of people experiencing income deprivation and is the same position as in 2015 and 2010.

Bradford is ranked the 6th most employment deprived local authority in terms of Rank of Employment Scale in England. This measures the actual number of people experiencing employment deprivation and is the same position as in 2015 and 2010.

Bradford has 104 LSOAs (an additional three since 2015) which fall within the 10% most deprived neighbourhoods in England and the same number of LSOAs since 2015 (16) which fall within the least deprived neighbourhoods.



Technical note

The Indices of Deprivation measure deprivation on a relative rather than an absolute scale, so a neighbourhood ranked 100th is more deprived than a neighbourhood ranked 200th, but this does not mean it is twice as deprived.

Data sources and further information

A more detailed briefing will follow this 'intelligence alert' by 11 October 2019

Source: Ministry of Housing, Communities & Local Government

Link: <https://www.gov.uk/government/statistics/english-indices-of-deprivation-2019>



Contact: Catriona Colborn

Email: catriona.colborn@bradford.gov.uk Telephone: 01274 434691

Office of the Chief Executive,

City of Bradford Metropolitan District Council,

3rd Floor, Margaret McMillan Tower, Princes way, Bradford, BD1 1NN

ubd.bradford.gov.uk

The wording in this publication can be made available in other formats such as large print. Please call 01274 43469.