



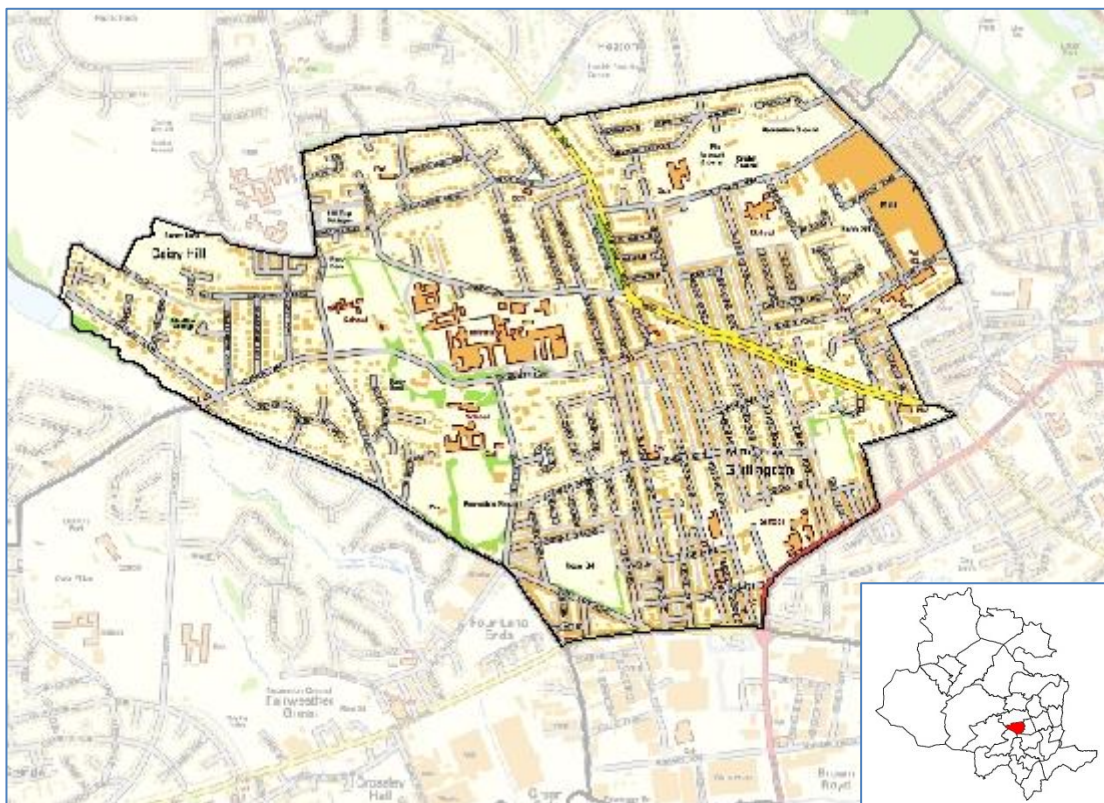
Ward Profile – Toller

At a glance:

- Toller ward has a total population of 20,310
- 2.6% of homes in Toller ward are empty on a long-term basis and 16.6% are overcrowded - both are higher than the District average
- Life expectancy for men living in Toller ward is higher than the District average and for women is below the District average
- Toller ward has the highest percentage of people of Pakistani origin in the District (72.3%) and the highest percentage of Muslims in the District (76.1%)
- Toller ward is ranked 5th of 30 wards in the District for the 2019 Index of Multiple Deprivation where 1 is the most deprived (Manningham ward) and 30 is the least deprived (Wharfedale).

Introduction

Toller ward is one of six wards in the Bradford West area. Toller is primarily residential, but includes the Bradford Royal Infirmary and the important city landmark of Listers Mill.



Population

The latest population estimates for mid-2018 show that 20,310 people live in Toller ward. 28.5% of the population is aged under 16. Craven has the lowest percentage of young people with 16.6%. Little Horton ward has the highest percentage in the District with 33%

63.1% of the ward's population is aged between 16 and 64. Ilkley has the lowest percentage of the working age population with 54.2%. City has the highest percentage in the District with 72.2% - this probably reflects the high numbers of students and young people living in the areas close to Bradford College and Bradford University.

7.2% of the population is aged 65 to 84. City ward has the lowest percentage with 4.8% and Craven has the highest percentage with 22.6%.

1.2% of the population is aged 85 and over. City ward has the lowest percentage with 0.7% and Ilkley has the highest percentage with 5.8%.

Ethnicity and religion

Ethnicity	Percentage
White	14.3%
Multiple/mixed ethnic groups	2.0%
Indian	3.8%
Pakistani	72.3%
Bangladeshi	0.8%
Other Asian	3.2%
Black	1.5%
Other ethnic group	2.0%

Toller ward has the lowest percentage of the White population (14.3%) and the highest percentage of the Pakistani population (72.3%). Wharfedale has the highest percentage of the White population (98.1%) and the lowest percentage of the Pakistani population (0.2%).

Religion	Percentage
Christian	13.0%
Buddhist	0.1%
Hindu	0.7%
Jewish	0.1%
Muslim	76.1%
Sikh	0.7%
Other religion	0.3%
No religion	3.4%
Religion not stated	5.6%

The question about religion in the 2011 census was voluntary and 5.6% of the Toller population chose not to answer.

Manningham has the lowest percentage of Christians (12.7%) and Craven ward has the highest percentage (67.5%). Ilkley and

Wharfedale both have an equal low percentage of Muslims (0.3%) and Toller has the highest percentage (76.1%).

Toller has the lowest percentage of people who do not have a religion (3.4%) and Eccleshill has the highest percentage (31.4%). Great Horton has the lowest percentage of people who chose not to answer the question about religion (5.3%) and Ilkley has the highest percentage (7.6%).

Housing

There are 5,760 homes in Toller ward of which 2.6% are long-term empty, this is higher than the District average of 1.9%. 51.3% of homes in Toller are terraced, 22.4% are semi-detached, 15.7% are flats and 10.6% are detached.

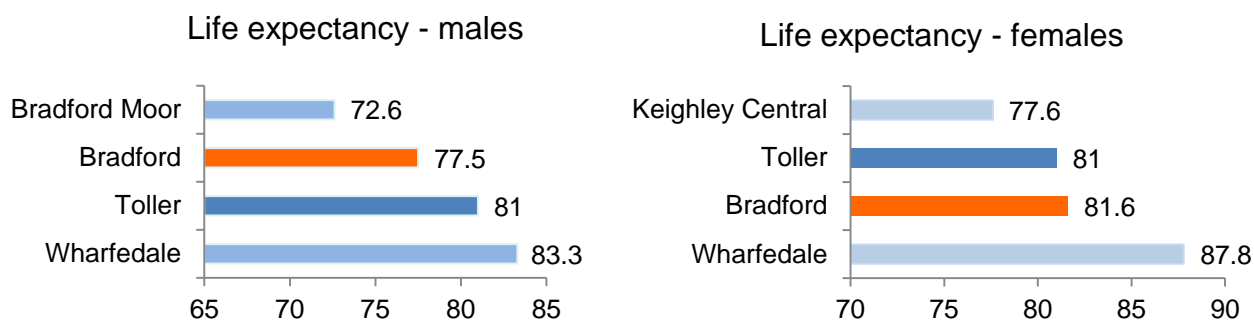
City ward has the lowest percentages of detached and semi-detached homes Baildon has the lowest percentages of terraced homes. Queensbury ward has the lowest percentages of flats.

Wharfedale has the highest percentage of detached properties and Bradford Moor has the highest percentage of terraced properties.

16.6% of households in Toller ward are living in overcrowded homes, this is higher than the District average of 6.2%. Wharfedale ward had the lowest rate at 1.2% and Manningham had the highest rate at 17.8%

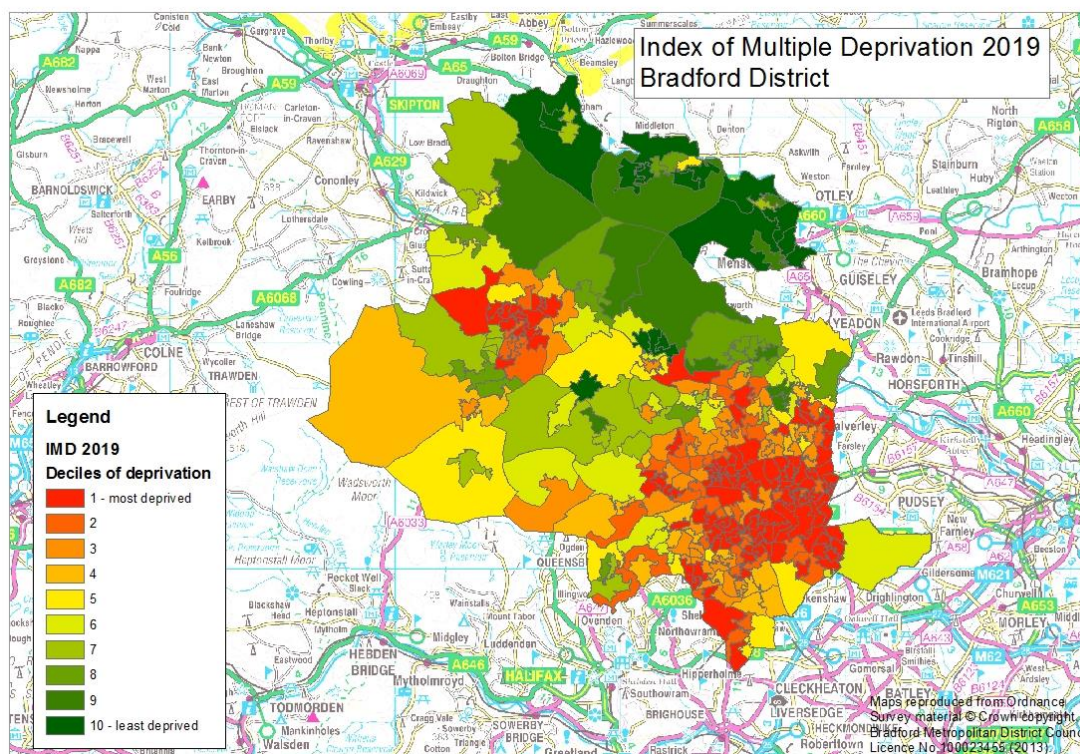
Life expectancy

In 2015-17 life expectancy at birth for males living in Toller ward was higher than the District average and life expectancy at birth for females was lower than the District average. Bradford Moor ward had the lowest life expectancy rate for males Keighley Central had the lowest life expectancy rate for females. Wharfedale ward had the highest life expectancy rates for both males and females.



Deprivation

The following map shows wards in Bradford District ranked by deciles of deprivation. Wards which are identified as being more deprived are shown in red and wards identified as being less deprived are shown in green.



The Indices of Deprivation 2019 were published in September 2019 at district and lower layer super output area. The indices are calculated using 39 separate indicators, organised across seven distinct domains of deprivation (income, employment, education skills and training, health deprivation and disability, crime, barriers to housing and services and living environment) which are weighted and combined to calculate the Index of Multiple Deprivation 2019.

The results have now been aggregated to ward level and this shows that 14 of the District's wards are amongst the 10% most deprived wards in England and one ward is amongst the 10% least deprived wards in England. Manningham is consistently the most deprived ward for most of the indices and Wharfedale is consistently the least deprived ward for most of the indices.

Toller is ranked 5th of 30 wards in the District for the Index of Multiple Deprivation where 1 is the most deprived and 30 is the least deprived. Toller is in 6th place for income deprivation and 7th place for employment deprivation and 7th place for education, skills and training deprivation.

More about deprivation

The data about deprivation has been aggregated to ward level. Although this data provides a description of the District's wards, this description does not apply to every person who lives there. Many non-deprived people live in deprived areas, and many deprived people live in non-deprived areas.

Data sources and further information

Source: 2011 Census, Mid-year population estimates, Indices of Deprivation 2019

Link: www.ons.gov.uk www.nomisweb.co.uk

For more information about population and deprivation at ward level see:

<https://ubd.bradford.gov.uk/>

Contact: Catriona Colborn
Email: catriona.colborn@bradford.gov.uk
Telephone: 01274 434691

Office of the Chief Executive,

City of Bradford Metropolitan District Council,
7th Floor, Margaret McMillan Tower, Princes Way, Bradford, BD1 1NN
ubd.bradford.gov.uk

Unless marked otherwise, you are free to use the content of this bulletin in your own work as long as you quote the source.

The wording in this publication can be made available in other formats such as large print. Please call 01274 434691

