



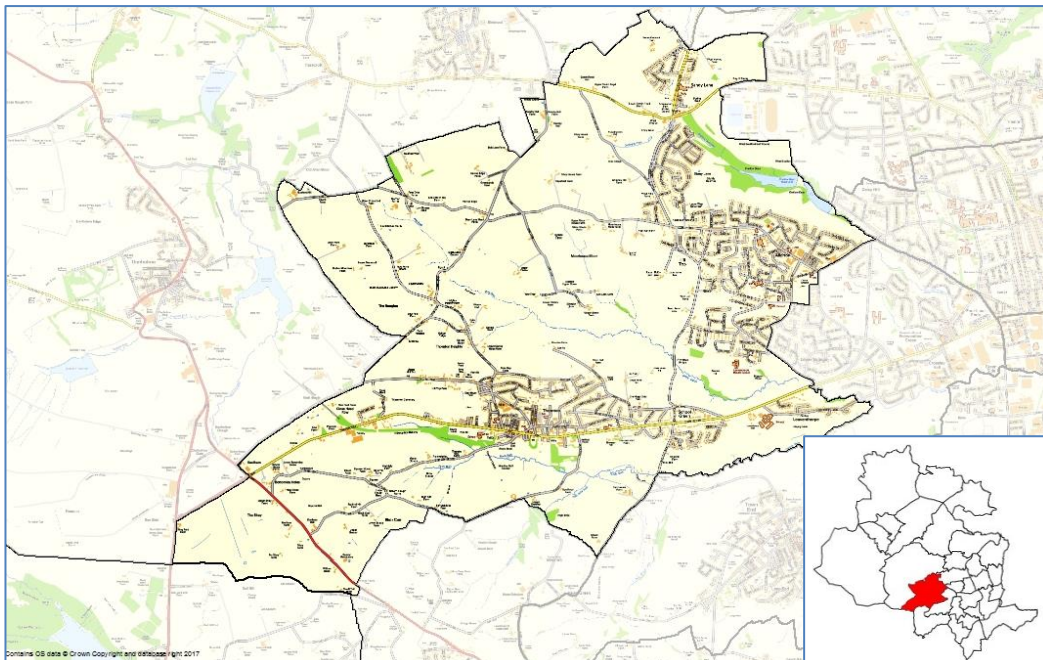
# Ward Profile – Thornton & Allerton

## At a glance:

- Thornton & Allerton has a total population of 18,000 people
- 1.6% of homes in Thornton & Allerton are empty on a long-term basis and 5% are overcrowded. Both are lower than the District average.
- Thornton & Allerton has a higher life expectancy rate for both males and females than the District average
- Thornton & Allerton is ranked 18<sup>th</sup> of 30 wards in the District for the 2019 Index of Multiple Deprivation where 1 is the most deprived (Manningham ward) and 30 is the least deprived (Wharfedale).

## Introduction

Thornton & Allerton ward is one of six wards in the Bradford West area. Thornton & Allerton stretches from Sandy Lane in the north to the District boundary with Calderdale in the south-west. It contains the suburb of Allerton and the village of Thornton, as well as large areas of surrounding agricultural land.



## Population

The latest population estimates for mid-2019 show that 18,000 people live in Thornton & Allerton ward. 23.8% of the population is aged under 16. Worth Valley has the lowest percentage of young people with 16.6% and Little Horton has the highest percentage with 32.7%.

60.2% of the ward's population is aged between 16 and 64. Ilkley has the lowest percentage of the working age population with 54% and City has the highest percentage with 72.2% - this probably reflects the high numbers of students and young people living in the areas close to Bradford College and Bradford University.

14.2% of the population of Thornton & Allerton is aged 65 to 84. City ward has the lowest percentage with 4.9% and Craven has the highest percentage with 23.1%.

1.7% of the Thornton & Allerton population is aged 85 and over. City ward has the lowest percentage with 0.7% and Ilkley has the highest percentage with 6.1%.

## Ethnicity and religion

Ethnicity	Percentage
White	78.3%
Multiple/mixed ethnic groups	3.1%
Indian	1.8%
Pakistani	10.8%
Bangladeshi	0.4%
Other Asian	2.9%
Black	1.8%
Other ethnic group	1.0%

Toller ward has the lowest percentage of the White population (14.3%) and the highest percentage of the Pakistani population (72.3%). Wharfedale has the highest percentage of the White population (98.1%) and the lowest percentage of the Pakistani population (0.2%).

Religion	Percentage
Christian	55.3%
Buddhist	0.2%
Hindu	0.7%
Jewish	0.0%
Muslim	13.0%
Sikh	0.6%
Other religion	0.6%
No religion	23.5%
Religion not stated	6.2%

The question about religion in the 2011 census was voluntary and 6.2% of the Thornton & Allerton population chose not to answer.

Manningham has the lowest percentage of Christians (12.7%) and Craven ward has the highest percentage

(67.5%). Ilkley and Wharfedale both have an equal low percentage of Muslims (0.3%) and Toller has the highest percentage (76.1%).

Toller has the lowest percentage of people who do not have a religion (3.4%) and Eccleshill has the highest percentage (31.4%). Great Horton has the lowest percentage of people who chose not to answer the question about religion (5.3%) and Ilkley has the highest percentage (7.6%).

## Housing

There are 7,712 homes in Thornton & Allerton ward of which 1.6% are long-term empty, this is lower than the District average of 1.9%.

44% of homes in Thornton & Allerton ward are semi-detached, 28.6% are terraced, 16% are detached, 11.5% are flats and 0.1% are caravans.

City ward has the lowest percentages of detached and semi-detached homes Baildon has the lowest percentages of terraced homes. Queensbury ward has the lowest percentages of flats.

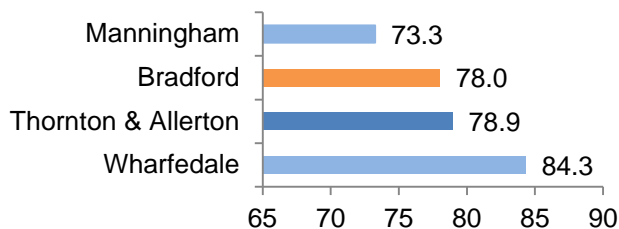
City ward has the highest percentages of flats. Eccleshill has the highest percentage of semi-detached homes and Bradford Moor has the highest percentage of terraced properties.

5.0% of households in Thornton & Allerton are living in overcrowded homes, Wharfedale ward had the lowest rate in the District with 1.2%. Manningham had the highest rate at 17.8%

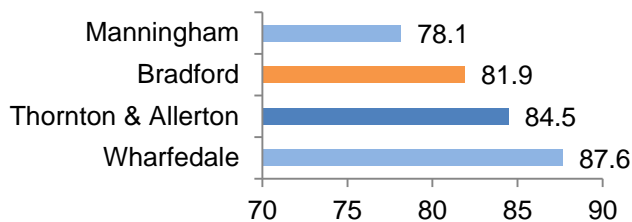
## Life expectancy

In 2017-19 life expectancy at birth for both males and females living in Thornton & Allerton was higher than the District average. Manningham ward had the lowest life expectancy rate for males and females. Wharfedale ward had the highest life expectancy rates for males and females.

Life expectancy - males

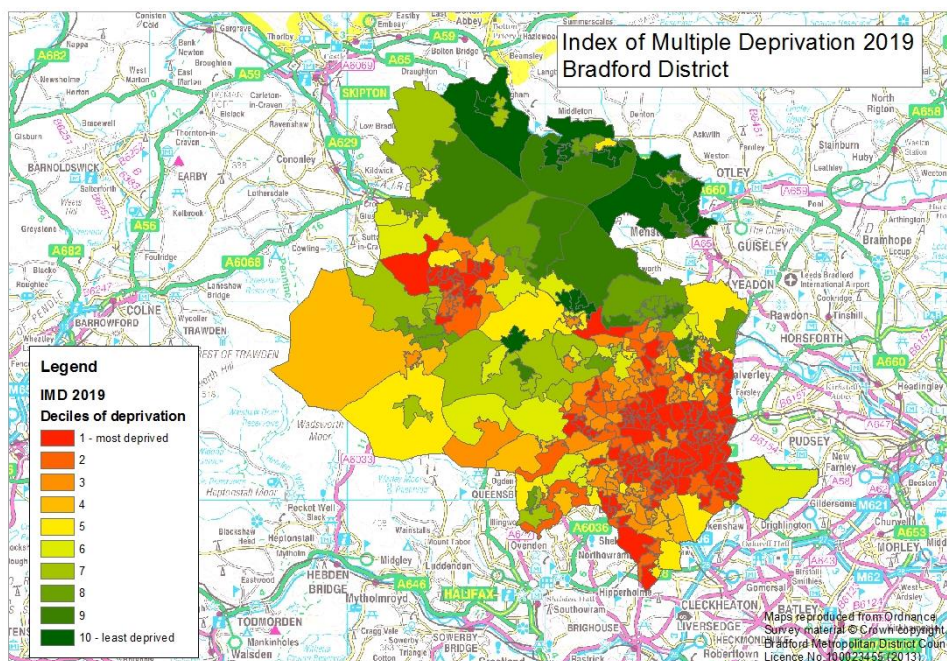


Life expectancy - females



## Deprivation

The following map shows wards in Bradford District ranked by deciles of deprivation. Wards which are identified as being more deprived are shown in red and wards identified as being less deprived are shown in green.



The Indices of Deprivation 2019 were published in September 2019 at district and lower layer super output area. The indices are calculated using 39 separate indicators, organised across seven distinct domains of deprivation (income, employment, education skills and training, health deprivation and disability, crime, barriers to housing and services and living environment) which are weighted and combined to calculate the Index of Multiple Deprivation 2019.

The results have now been aggregated to ward level and this shows that 14 of the District's wards are amongst the 10% most deprived wards in England and one ward is amongst the 10% least deprived wards in England. Manningham is consistently the most deprived ward for most of the indices and Wharfedale is consistently the least deprived ward for most of the indices.

Thornton & Allerton is ranked 18<sup>th</sup> out of 30 wards where 1 is the most deprived and 30 is the least deprived. Thornton & Allerton is in 16<sup>th</sup> place for both income and employment deprivation and 19<sup>th</sup> place for education, skills and training deprivation.

## More about deprivation

The data about deprivation has been aggregated to ward level. Although this data provides a description of the District's wards, this description does not apply to every person who lives there. Many non-deprived people live in deprived areas, and many deprived people live in non-deprived areas.

## Data sources and further information

Source: 2011 Census, Mid-year population estimates, Indices of Deprivation 2019

Link: [www.ons.gov.uk](http://www.ons.gov.uk) [www.nomisweb.co.uk](http://www.nomisweb.co.uk)

For more information about population and deprivation at ward level see:

<https://ubd.bradford.gov.uk/>

Contact: Catriona Colborn  
Email: [catriona.colborn@bradford.gov.uk](mailto:catriona.colborn@bradford.gov.uk)  
Telephone: 01274 434691

### **Office of the Chief Executive,**

City of Bradford Metropolitan District Council,  
7<sup>th</sup> Floor, Margaret McMillan Tower, Princes Way, Bradford, BD1 1NN

[ubd.bradford.gov.uk](http://ubd.bradford.gov.uk)

Unless marked otherwise, you are free to use the content of this bulletin in your own work as long as you quote the source.

The wording in this publication can be made available in other formats such as large print. Please call 01274 434691

