



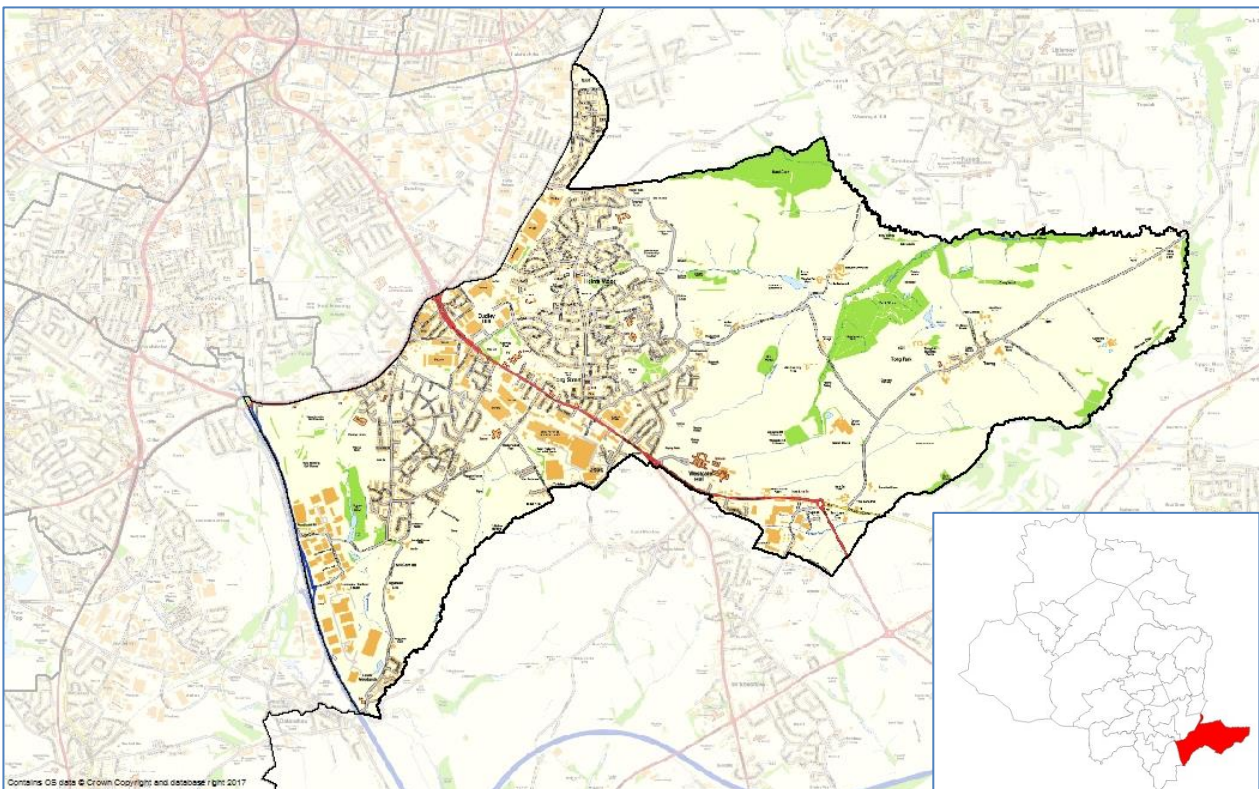
Ward Profile – Tong

At a glance:

- Tong ward has a total population of 22,720
- 1.5% of homes in Tong ward are empty on a long-term basis, this is lower than the District average. 6.3% of homes are overcrowded – this is slightly higher than the District average of 6.2%
- Life expectancy for both men and women living in Tong ward is lower than the District averages
- Tong ward is ranked 8th of 30 wards in the District for the 2019 Index of Multiple Deprivation where 1 is the most deprived (Manningham ward) and 30 is the least deprived (Wharfedale).

Introduction

Tong ward is one of six wards in the Bradford South area. Tong stretches from the M606 motorway in the west to the boundary with Leeds in the east. It includes the village of Tong and the communities of Holme Wood, Dudley Hill and Bierley. The ward also includes areas of open countryside and industrial areas such as the Euroway Industrial estate.



Population

The latest population estimates for mid-2019 show that 22,720 people live in Tong ward. 27.5% of the population is aged under 16. Worth Valley has the lowest percentage of young people with 16.6% and Little Horton has the highest percentage with 32.7%.

61.1% of the ward's population is aged between 16 and 64. Ilkley has the lowest percentage of the working age population with 54%. City has the highest percentage in the District with 72.2% - this probably reflects the high numbers of students and young people living in the areas close to Bradford College and Bradford University.

10% of the population is aged 65 to 84. City ward has the lowest percentage with 4.9% and Craven ward has the highest percentage with 23.1%.

1.3% of the population is aged 85 and over. City ward has the lowest percentage with 0.7% and Ilkley has the highest percentage with 6.1%.

Ethnicity and religion

Ethnicity	Percentage
White	84.3%
Multiple/mixed ethnic groups	3.7%
Indian	2.0%
Pakistani	3.2%
Bangladeshi	0.4%
Other Asian	1.3%
Black	3.9%
Other ethnic group	1.3%

Toller ward has the lowest percentage of the White population (14.3%) and the highest percentage of the Pakistani population (72.3%). Wharfedale has the highest percentage of the White population (98.1%) and the lowest percentage of the Pakistani population (0.2%).

Religion	Percentage
Christian	55.2%
Buddhist	0.2%
Hindu	0.8%
Jewish	0.0%
Muslim	4.9%
Sikh	1.3%
Other religion	0.3%
No religion	31.1%
Religion not stated	6.2%

The question about religion in the 2011 census was voluntary and 6.2% of the Tong population chose not to answer.

Manningham has the lowest percentage of Christians (12.7%) and Craven ward has the highest percentage (67.5%). Ilkley and

Wharfedale both have an equal low percentage of Muslims (0.3%) and Toller has the highest percentage (76.1%).

Toller has the lowest percentage of people who do not have a religion (3.4%) and Eccleshill has the highest percentage (31.4%). Great Horton has the lowest percentage of people who chose not to answer the question about religion (5.3%) and Ilkley has the highest percentage (7.6%).

Housing

There are 8,783 homes in Tong ward of which 1.5% are long-term empty, this is lower than the District average of 1.9%. 45.5% of homes in Tong are semi-detached, 26.1% are terraced, 15.9% are flats, 12.6% are detached and 0.1% are caravans.

City ward has the lowest percentages of detached and semi-detached homes Baildon has the lowest percentages of terraced homes. Queensbury ward has the lowest percentages of flats.

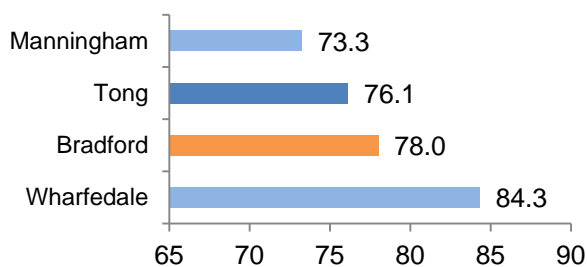
Wharfedale has the highest percentage of detached properties and Bradford Moor has the highest percentage of terraced properties.

6.3% of households in Tong ward are living in overcrowded homes, this is slightly higher than the District average of 6.2%. Wharfedale ward had the lowest rate at 1.2% and Manningham had the highest rate at 17.8%

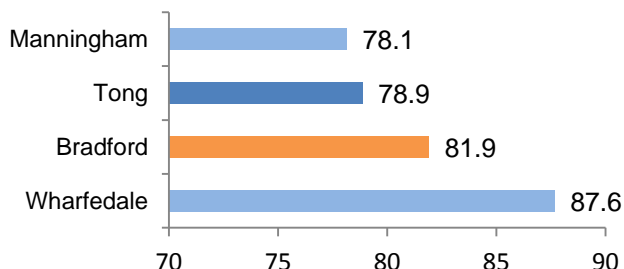
Life expectancy

In 2017-19 life expectancy at birth for both males and females living in Tong ward was lower than the District average. Manningham ward had the lowest life expectancy rate for males and females. Wharfedale ward had the highest life expectancy rates for males and females.

Life expectancy - males

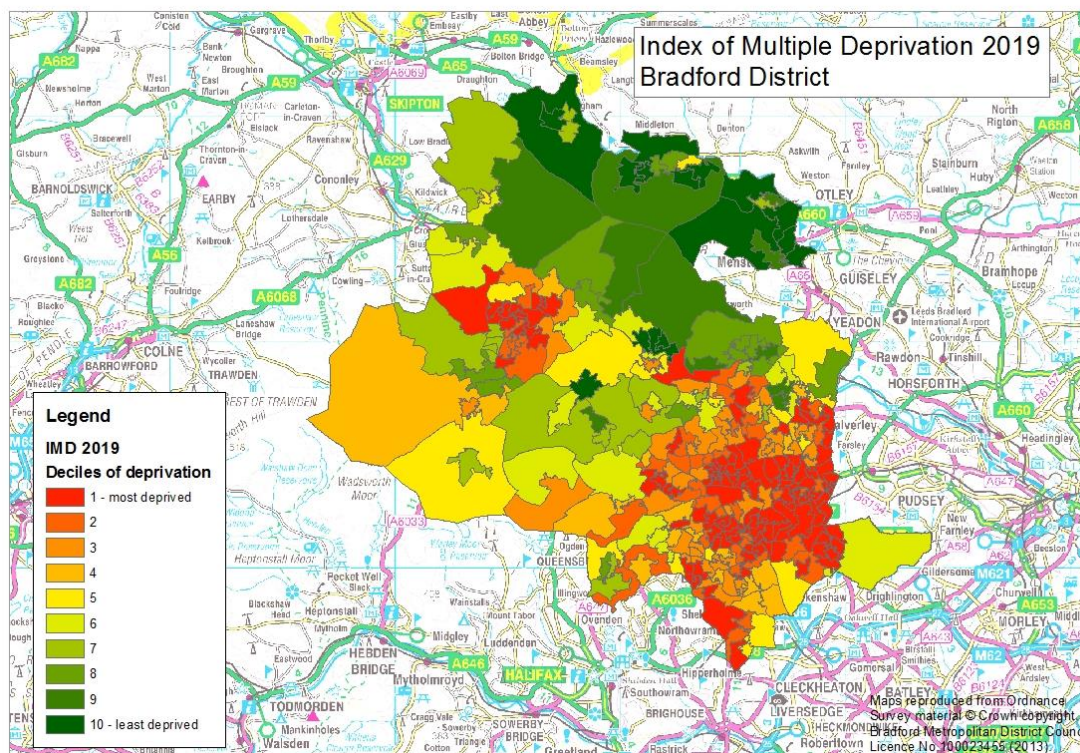


Life expectancy - females



Deprivation

The following map shows wards in Bradford District ranked by deciles of deprivation. Wards which are identified as being more deprived are shown in red and wards identified as being less deprived are shown in green.



The Indices of Deprivation 2019 were published in September 2019 at district and lower layer super output area. The indices are calculated using 39 separate indicators, organised across seven distinct domains of deprivation (income, employment, education skills and training, health deprivation and disability, crime, barriers to housing and services and living environment) which are weighted and combined to calculate the Index of Multiple Deprivation 2019.

The results have now been aggregated to ward level and this shows that 14 of the District's wards are amongst the 10% most deprived wards in England and one ward is amongst the 10% least deprived wards in England. Manningham is consistently the most deprived ward for most of the indices and Wharfedale is consistently the least deprived ward for most of the indices.

Tong is ranked 8th of 30 wards in the District for the Index of Multiple Deprivation where 1 is the most deprived and 30 is the least deprived. Tong is in 5th place for income deprivation, 3rd place for employment deprivation and 4th place for education, skills and training deprivation.

More about deprivation

The data about deprivation has been aggregated to ward level. Although this data provides a description of the District's wards, this description does not apply to every person who lives there. Many non-deprived people live in deprived areas, and many deprived people live in non-deprived areas.

Data sources and further information

Source: 2011 Census, Mid-year population estimates, Indices of Deprivation 2019

Link: www.ons.gov.uk www.nomisweb.co.uk

For more information about population and deprivation at ward level see:

<https://ubd.bradford.gov.uk/>

Contact: Catriona Colborn
Email: catriona.colborn@bradford.gov.uk
Telephone: 01274 434691

Office of the Chief Executive,

City of Bradford Metropolitan District Council,
7th Floor, Margaret McMillan Tower, Princes Way, Bradford, BD1 1NN
ubd.bradford.gov.uk

Unless marked otherwise, you are free to use the content of this bulletin in your own work as long as you quote the source.

The wording in this publication can be made available in other formats such as large print. Please call 01274 434691

