



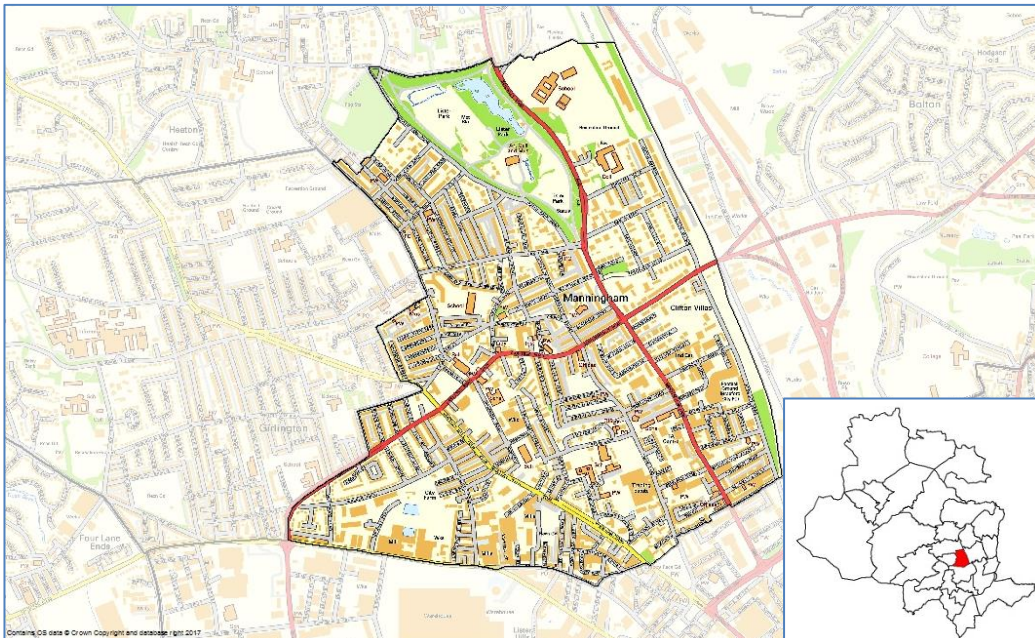
Ward Profile – Manningham

At a glance:

- Manningham ward has a total population of 20,310
- 3.3% of homes in Manningham ward are empty on a long-term basis and 17.8% are overcrowded - both are higher than the District average and Manningham ward has the highest percentage of overcrowded households in the District
- Manningham ward has the lowest life expectancy rates in the District for both men and women
- Manningham ward is ranked as the most deprived ward in the District by the 2019 Index of Multiple Deprivation. Manningham ward is also the most income and employment deprived ward in the District

Introduction

Manningham ward is one of six wards in the Bradford West area. Manningham ward lies to the north of Bradford city centre. This inner city area of residential and commercial use stretches as far north as Bradford Grammar School and Lister Park.



Population

The latest population estimates for mid-2020 show that 20,310 people live in Manningham ward. 27.4% of the population is aged under 16. Worth Valley has the lowest percentage of young people with 16.4% and Little Horton has the highest percentage with 32.2%.

64.5% of the ward's population is aged between 16 and 64. Ilkley has the lowest percentage of the working age population with 54.3% and City has the highest percentage with 72.6% - this probably reflects the high numbers of students and young people living in the areas close to Bradford College and Bradford University.

7.2% of the population is aged 65 to 84. City ward has the lowest percentage with 5% and Craven has the highest percentage with 23.3%.

0.9% of the population is aged 85 and over. City ward has the lowest percentage with 0.7% and Ilkley has the highest percentage with 6.1%.

Ethnicity and religion

Ethnicity	Percentage
White	14.9%
Multiple/mixed ethnic groups	2.4%
Indian	4.5%
Pakistani	60.3%
Bangladeshi	9.0%
Other Asian	3.3%
Black	2.8%
Other ethnic group	2.8%

Toller ward has the lowest percentage of the White population (14.3%) and the highest percentage of the Pakistani population (72.3%). Wharfedale has the highest percentage of the White population (98.1%) and the lowest percentage of the Pakistani population

(0.2%).

Religion	Percentage
Christian	12.7%
Buddhist	0.1%
Hindu	0.6%
Jewish	0.1%
Muslim	75.0%
Sikh	0.5%
Other religion	0.2%
No religion	4.5%
Religion not stated	6.5%

The question about religion in the 2011 census was voluntary and 6.5% of the Manningham population chose not to answer.

Manningham has the lowest percentage of Christians (12.7%) and Craven ward has the highest percentage (67.5%). Ilkley and

Wharfedale both have an equal low percentage of Muslims (0.3%) and Toller has the highest percentage (76.1%).

Toller has the lowest percentage of people who do not have a religion (3.4%) and Eccleshill has the highest percentage (31.4%). Great Horton has the lowest percentage of people who chose not to answer the question about religion (5.3%) and Ilkley has the highest percentage (7.6%).

Housing

There are 5,850 homes in Manningham ward of which 3.3% are long-term empty, this is higher than the District average of 1.9%. 52.4% of homes in Manningham are terraced, 34.3% are flats, 8.8% are semi-detached, 4.3% are detached and 0.2% are caravans.

City ward has the lowest percentages of detached and semi-detached homes Baildon has the lowest percentages of terraced homes. Queensbury ward has the lowest percentages of flats.

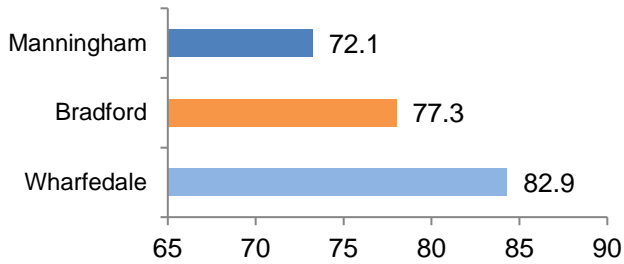
Wharfedale has the highest percentage of detached properties and Bradford Moor has the highest percentage of terraced properties.

17.8% of households in Manningham ward are living in overcrowded homes, this is the highest rate in the District. Wharfedale ward had the lowest rate at 1.2%.

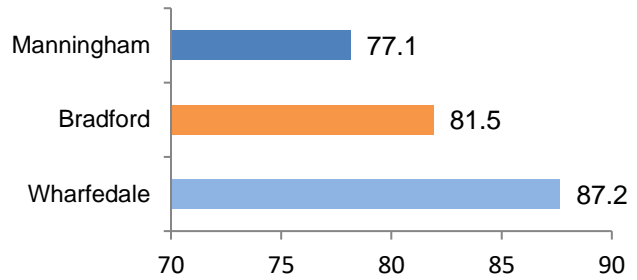
Life expectancy

In 2018-20 Manningham ward had the lowest life expectancy rates at birth for both males and females. Wharfedale ward had the highest life expectancy rates for both males and females.

Life expectancy - males

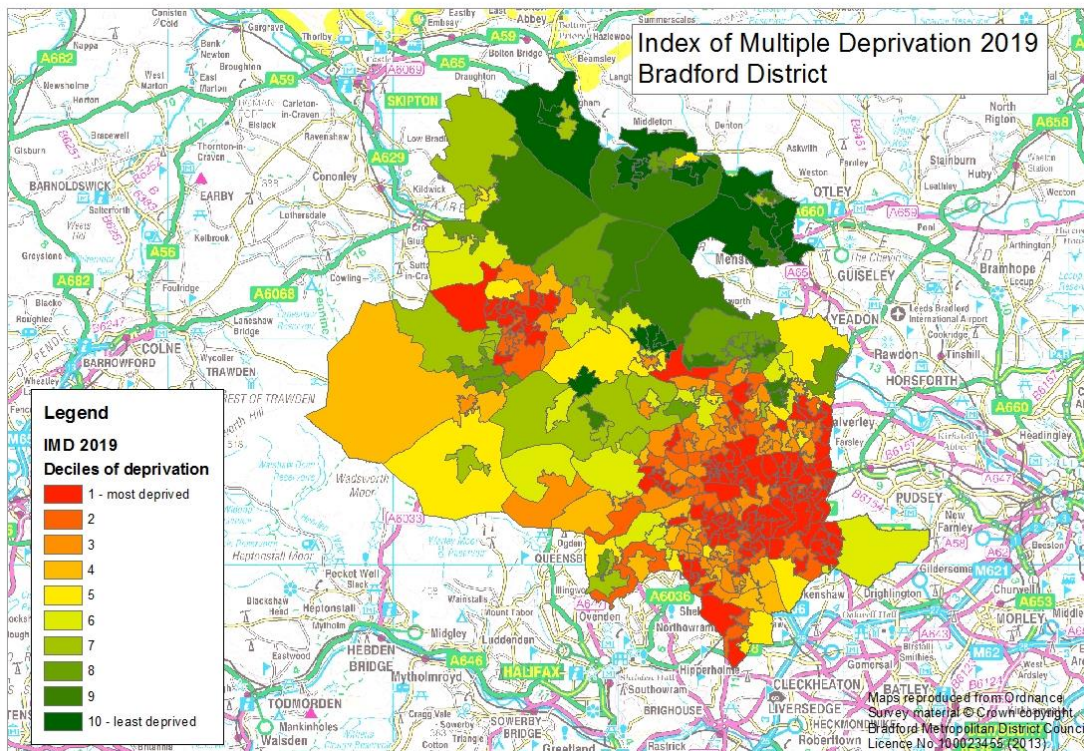


Life expectancy - females



Deprivation

The following map shows wards in Bradford District ranked by deciles of deprivation. Wards which are identified as being more deprived are shown in red and wards identified as being less deprived are shown in green.



The Indices of Deprivation 2019 were published in September 2019 at district and lower layer super output area. The indices are calculated using 39 separate indicators, organised across seven distinct domains of deprivation (income, employment, education skills and training, health deprivation and disability, crime, barriers to housing and services and living environment) which are weighted and combined to calculate the Index of Multiple Deprivation 2019.

The results have now been aggregated to ward level and this shows that 14 of the District's wards are amongst the 10% most deprived wards in England and one ward is amongst the 10% least deprived wards in England. Manningham is consistently the most deprived ward for most of the indices and Wharfedale is consistently the least deprived ward for most of the indices.

Manningham ward is also ranked the most deprived for income deprivation, employment deprivation and education, skills and training deprivation.

More about deprivation

The data about deprivation has been aggregated to ward level. Although this data provides a description of the District's wards, this description does not apply to every person who lives there. Many non-deprived people live in deprived areas, and many deprived people live in non-deprived areas.

Data sources and further information

Source: 2011 Census, Mid-year population estimates, Indices of Deprivation 2019

Link: www.ons.gov.uk www.nomisweb.co.uk

For more information about population and deprivation at ward level see:

<https://ubd.bradford.gov.uk/>

Contact: Catriona Colborn
Email: catriona.colborn@bradford.gov.uk
Telephone: 01274 434691

Office of the Chief Executive,
City of Bradford Metropolitan District Council,
7th Floor, Margaret McMillan Tower, Princes Way, Bradford, BD1 1NN
ubd.bradford.gov.uk



Unless marked otherwise, you are free to use the content of this bulletin in your own work as long as you quote the source.

The wording in this publication can be made available in other formats such as large print. Please call 01274 434691