



# 2021 Census

## Ethnic group, religion and language spoken

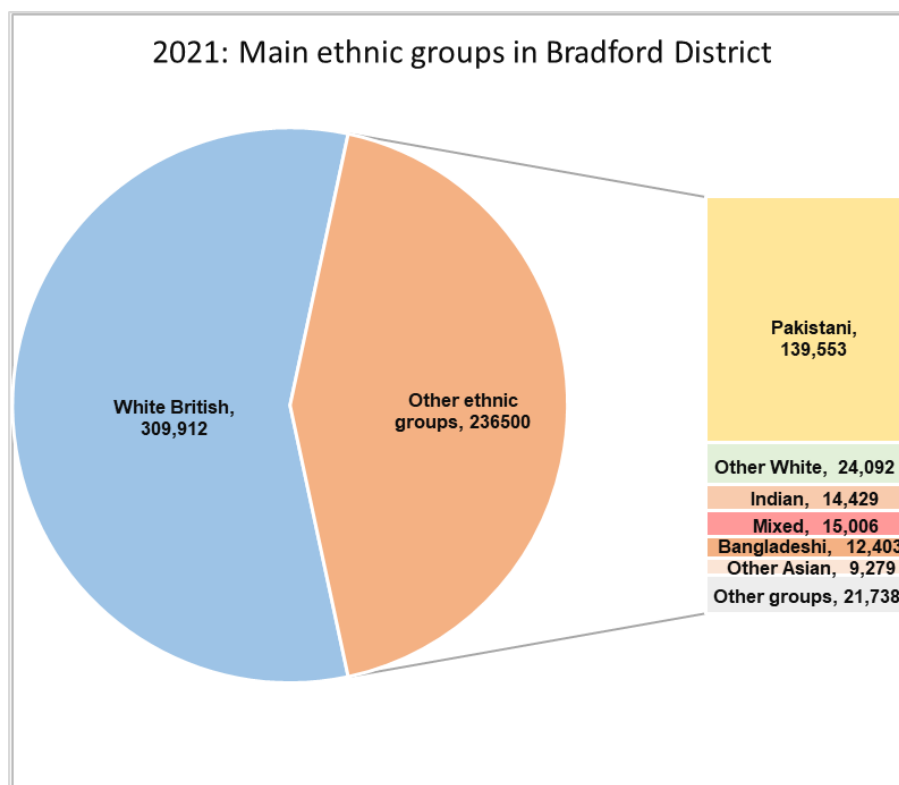
### At a glance:

- The Asian or British Asian population of Bradford increased from 26.8% in 2011 to 32.1% in 2021.
- The White British population has decreased from 63.9% in 2011 to 56.7% in 2021.
- Christians form the largest faith group - 33.4% (a decrease from the 2011 total of 45.9%), followed by Muslims - 30.5% (an increase from the 2011 total of 24.7%). 28.2% do not have a religion – an increase from the 2011 total of 20.7%.
- 12.4% of the population aged 3 and more do not have English as a main language
- 65.1% of the population identify as British – the highest percentage in England

### Ethnic group

The 2021 Census asked people for their ethnic group or background.

56.7% of the Bradford District population identified as White British, 25.5% identified as Pakistani – the second largest percentage nationally. 2.6% identified as Indian, 2.3% identified as Bangladeshi, 2.7% identified as Mixed or Multiple ethnic groups, 2% identified as Black. This question included a new category, Roma and 1,583 of the District's population (0.3%) identified as Roma.



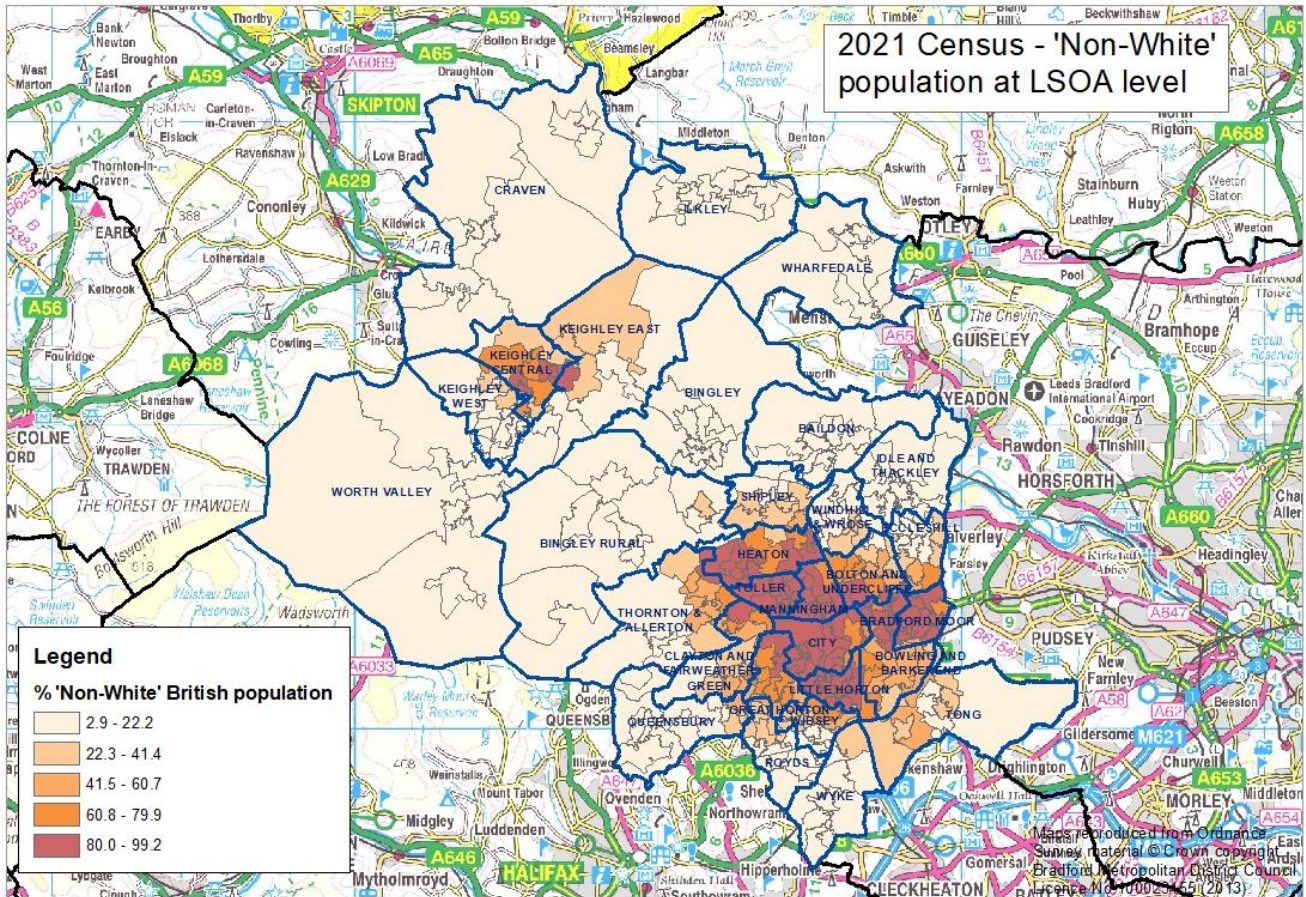
<b>Main ethnic groups in Bradford District and England</b>				
		<b>Bradford District - total</b>	<b>Bradford District %</b>	<b>England %</b>
	<b>Total population</b>	546,412	100%	100%
<b>White</b>	<b>White</b>	<b>334,004</b>	<b>61.1%</b>	<b>81.0%</b>
	British	309,912	56.7%	73.5%
	Irish	2,139	0.4%	0.9%
	Gypsy or Irish Traveller	849	0.2%	0.1%
	Roma	1,583	0.3%	0.2%
	Any other White background	19,521	3.6%	6.3%
<b>Mixed or Multiple ethnic groups</b>	<b>Mixed or Multiple ethnic groups</b>	<b>15,006</b>	<b>2.7%</b>	<b>3.0%</b>
	White and Asian	6,458	1.2%	0.8%
	White and Black African	1,196	0.2%	0.4%
	White and Black Caribbean	4,426	0.8%	0.9%
	Any other Mixed or Multiple ethnic groups	2,926	0.5%	0.8%
<b>Asian or Asian British</b>	<b>Asian or Asian British</b>	<b>175,664</b>	<b>32.1%</b>	<b>9.6%</b>
	Bangladeshi	12,403	2.3%	1.1%
	Chinese	1,345	0.2%	0.8%
	Indian	14,429	2.6%	3.3%
	Pakistani	139,553	25.5%	2.8%
	Any other Asian background	7,934	1.5%	1.7%
<b>Black, Black British, Caribbean or African</b>	<b>Black, Black British, Caribbean or African</b>	<b>10,978</b>	<b>2.0%</b>	<b>4.2%</b>
	African	7,061	1.3%	2.6%
	Caribbean	2,614	0.5%	1.1%
	Any other Black, Black British or Caribbean background	1,303	0.2%	0.5%
<b>Other ethnic group</b>	<b>Other ethnic group</b>	<b>10,760</b>	<b>2.0%</b>	<b>2.2%</b>
	Arab	2,734	0.5%	0.6%
	Any other ethnic group	8,026	1.5%	1.6%

Note: Percentages may not sum to 100% due to rounding

The Asian or Asian British minority ethnic group population of Bradford District has increased from 26.8% in 2011 to 32.1% in 2021. If the other Ethnic Minority groups with the exception of 'White British' are also included, then the non 'White British' population has increased from 36.1% of all people in 2011 to 43.3% in 2021.

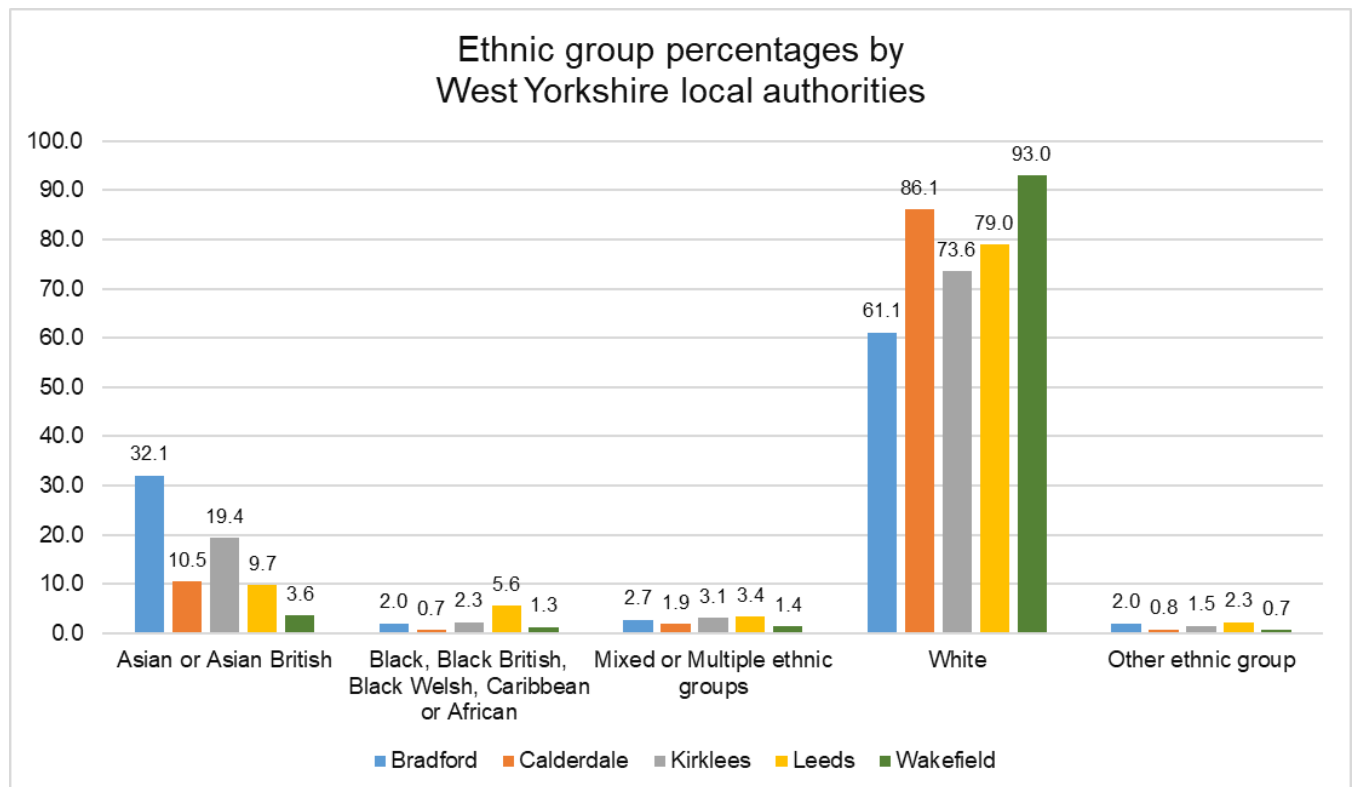
**2011 results** – 63.9% of the population identified as White British, 20.5% identified as Pakistani – the largest percentage nationally. 2.6% identified as Indian, 1.9% identified as Bangladeshi, 2.5% identified as Mixed or Multiple ethnic groups, 1.8% identified as Black.

The map overleaf at Lower Layer Super Output Area (LSOA) shows that the largest percentages of the 'Non-White' British population live in the urban areas of Keighley and Bradford City itself.



## Bradford compared with other local authorities

A comparison with the other local authorities in West Yorkshire shows that Bradford has the highest percentage of people who identified as Asian or Asian British and the lowest percentage of people who identified as White.



The London Borough of Redbridge has the highest percentage of people who identify as Asian or Asian British (47.3%). Outside of London, Leicester has the highest percentage with 43.3%, followed by Luton (37%), Blackburn with Darwen (35.7%) and Bradford (32.1%).

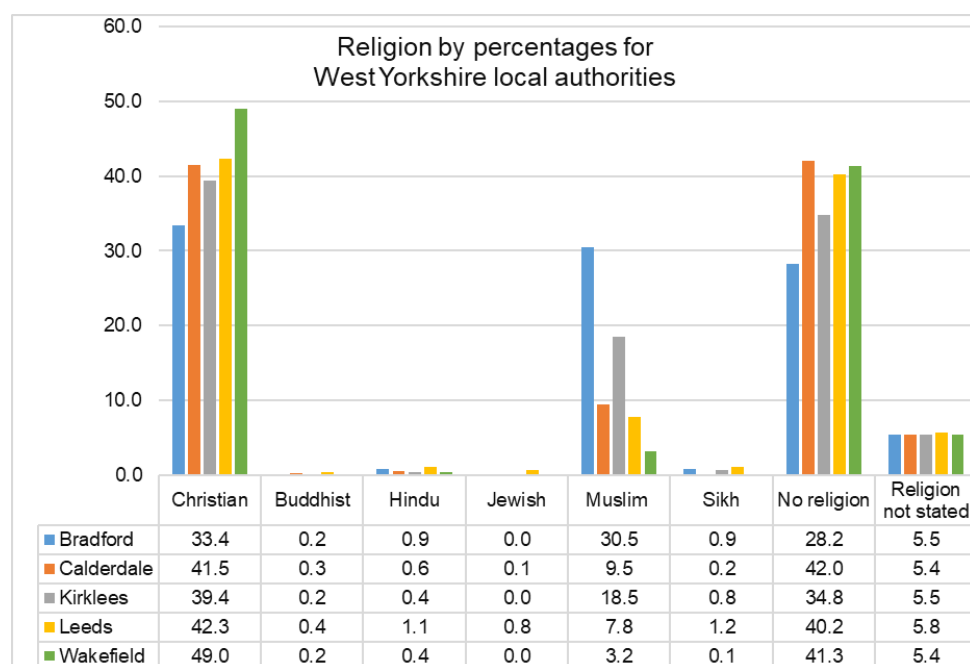
## Religion

The question about Religion in the 2021 Census was voluntary. 33.4% of the District's population identified as Christian, 30.5% identified as Muslim, 0.9% identified as Sikh, 0.9% identified as Hindu, 28.2% of the population said that they had no religion and 5.5% chose not to provide an answer

Main religions in Bradford and England			
	Bradford District total number of people	Bradford District %	England %
Christian	182,566	33.4%	46.3%
Buddhist	959	0.2%	0.5%
Hindu	4,757	0.9%	1.8%
Jewish	254	0.0%	0.5%
Muslim	166,846	30.5%	6.7%
Sikh	4,834	0.9%	0.9%
Other religion	2,074	0.4%	0.6%
No religion	154,305	28.2%	36.7%
Religion not stated	29,816	5.5%	6.0%

**2011 results** – 45.9% of the population were Christian, 24.7% were Muslim, 1% were Sikh, 0.9% were Hindu, 20.7% of the population said that they had no religion and 6.2% chose not to provide an answer. Bradford District had the fourth largest percentage of people who identified as Muslim, after the London Boroughs of Newham and Tower Hamlets, and Blackburn with Darwen.

## Bradford compared with other local authorities



Bradford has the lowest percentage of people who identify as Christian and people who say that they do not have a religion and the highest percentage of people who identify as Muslim in West Yorkshire.

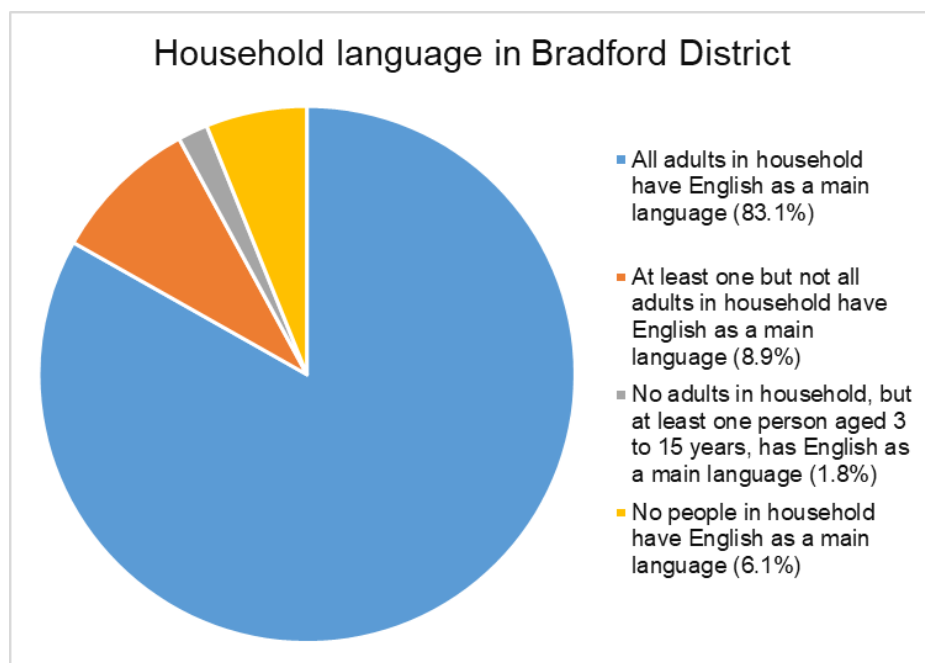
Rates for people who chose not to answer the question about religion are very similar for other West Yorkshire local authorities.

The London Borough of Tower Hamlets has the largest percentage of people who identify as Muslim (39.9%). Outside

London, Blackburn and Darwen has the highest percentage (35%) followed by Bradford (30.5%).

## Main language spoken

The census asked all residents aged 3 and over about their main language and how well they could speak English. The main results show that 87.6% had English as their main language, 7.2% speak a South Asian language as their main language (2.6% speak Panjabi, 2.9% speak Urdu, 0.7% speak Bengali) 1.1% speak Polish as their main language, 0.1% use Sign Language and 4% speak other languages.



Looking at the data for households shows that in 83.1% of Bradford households all the adults have English as a main language. This is the lowest rate in West Yorkshire and lower than the national average of 89.3%.

Bradford also has the highest rate (1.8%) for households where no adults, but a child aged between 3 and 15 has English as a main language.

6.1% of Bradford households have no one with English as a main language, the national rate is 5%.

## Proficiency in English language

12.4% of Bradford residents do not have English as their main language. Of this group 3.5% can speak English very well, 4.7% can speak English well, 3.4% cannot speak English well and 3,843 people (0.7%) cannot speak English.

**2011 results** – 85.3% of the population spoke English as their main language, 9.5% of the population spoke South Asian languages (4% spoke Panjabi, 3.3% spoke Urdu, 1% spoke Bengali), 1.1% spoke Polish, 0.1% used Sign Language.

## Different languages within households

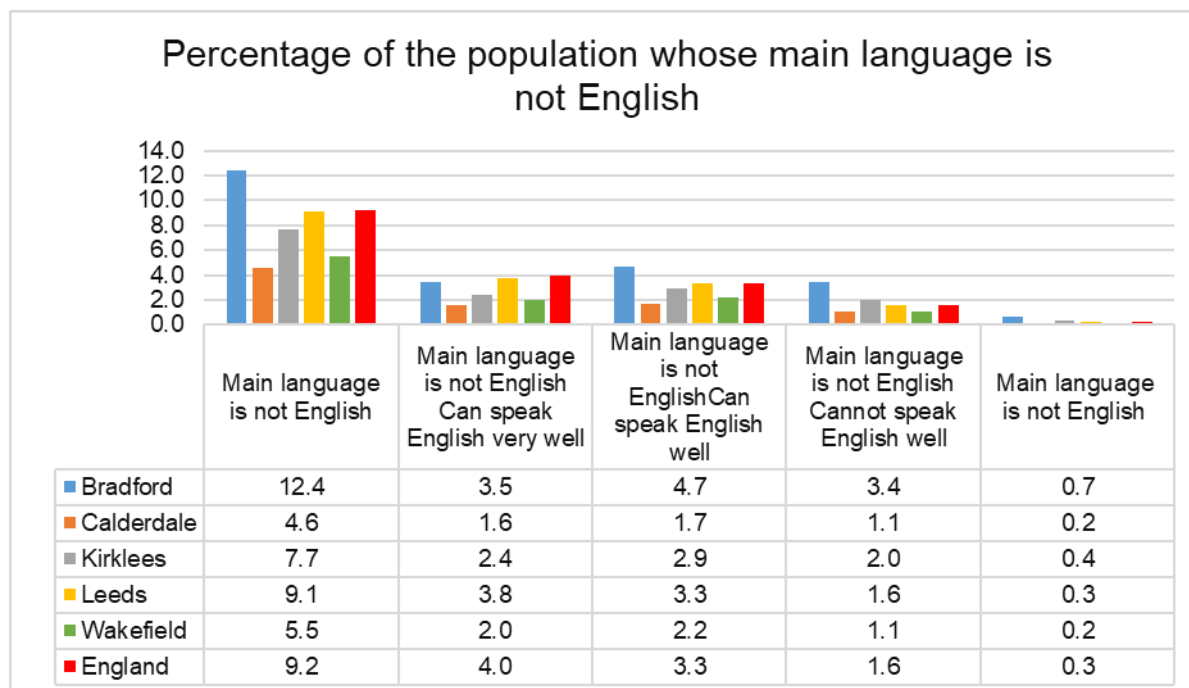
The census also analysed the way in which language is spoken within households. In Bradford District 58% of all household members use the same language. This is the lowest rate in West Yorkshire and lower than the national figure of 63.7%.

Different generations within the same household in Bradford District are also more likely to use different languages (3.4%) than the national average (2%).

Language was also found to differ between partnerships in 4.5% of households (the national average is 2.2%). 3.4% of Bradford's households also use a combination of languages. 30.8% of households in Bradford District comprise a single person which is higher than Wakefield, but lower than the other local authorities in West Yorkshire and lower than the national average of 30.1%.

## Bradford compared with other local authorities

Bradford has a higher percentage than the England average and the highest percentage of people in West Yorkshire whose main language is not English.



## National identity

The Census asked people about their national identity. The largest percentage of the District's population identified as British (65.1%). 12% identified as English and British and 11.5% identified as English. 8.6% identified as Other identity and at least one UK identity, 1.8% indicated that they have a non-UK identity and 8.8% indicated that they have a UK identity and non-UK identity.

## Bradford compared with other local authorities

Bradford has the highest percentage of people who identify as British in England.

<b>National identity in local authorities in West Yorkshire compared with England</b>						
National identity	Bradford	Calderdale	Kirklees	Leeds	Wakefield	England
British only	65.1%	61.2%	63.2%	59.1%	57.8%	56.8%
English only	11.5%	16.0%	14.1%	12.6%	16.2%	15.3%
English and British	12.0%	16.0%	14.6%	15.4%	18.6%	14.3%
Welsh only	0.1%	0.2%	0.1%	0.2%	0.1%	0.3%
Any other combination of UK identities	0.0%	0.1%	0.1%	0.1%	0.1%	0.2%
Irish only	0.6%	0.9%	0.7%	1.1%	0.7%	1.1%
Irish and one other UK identity	0.2%	0.4%	0.3%	0.5%	0.2%	0.5%
Other identity only	0.0%	0.1%	0.1%	0.1%	0.0%	0.1%
Other identity and at least one UK identity	8.6%	4.2%	5.5%	9.3%	5.3%	9.5%
Non-UK identity only	1.8%	1.1%	1.3%	1.7%	0.9%	1.9%
UK identity and non-UK identity	8.8%	4.5%	5.8%	9.8%	5.5%	10.0%

## Data sources and further information

The next bulletin in this series will provide information about the Labour market and will be published on Thursday 8<sup>th</sup> December 2022

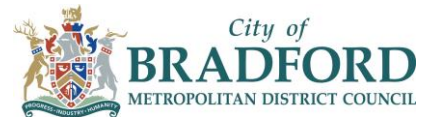
Source: Office for National Statistics (ONS) 2021 Census for England and Wales

Link: [www.ons.gov.uk/census](http://www.ons.gov.uk/census)

## Future Census data releases:

The following data will be available at district-wide level. Information at ward level and for two or more data variables will be available in Spring 2023.

- 8 December 2022 Labour market and travel to work
- 5 January 2023 Housing
- 6 January 2023 Sexual orientation and gender identity
- 10 January 2023 Education
- 19 January 2023 Health, disability and unpaid care



Contact: Catriona Colborn

Email: [catriona.colborn@bradford.gov.uk](mailto:catriona.colborn@bradford.gov.uk) Telephone: 07971 014319

**Office of the Chief Executive,**

City of Bradford Metropolitan District Council,

7<sup>th</sup> Floor, Margaret McMillan Tower, Princes Way, Bradford, BD1 1NN

Unless marked otherwise, you are free to use the content of this bulletin in your own work as long as you quote the source.

The wording in this publication can be made available in other formats such as large print. Please call 07971 014319