



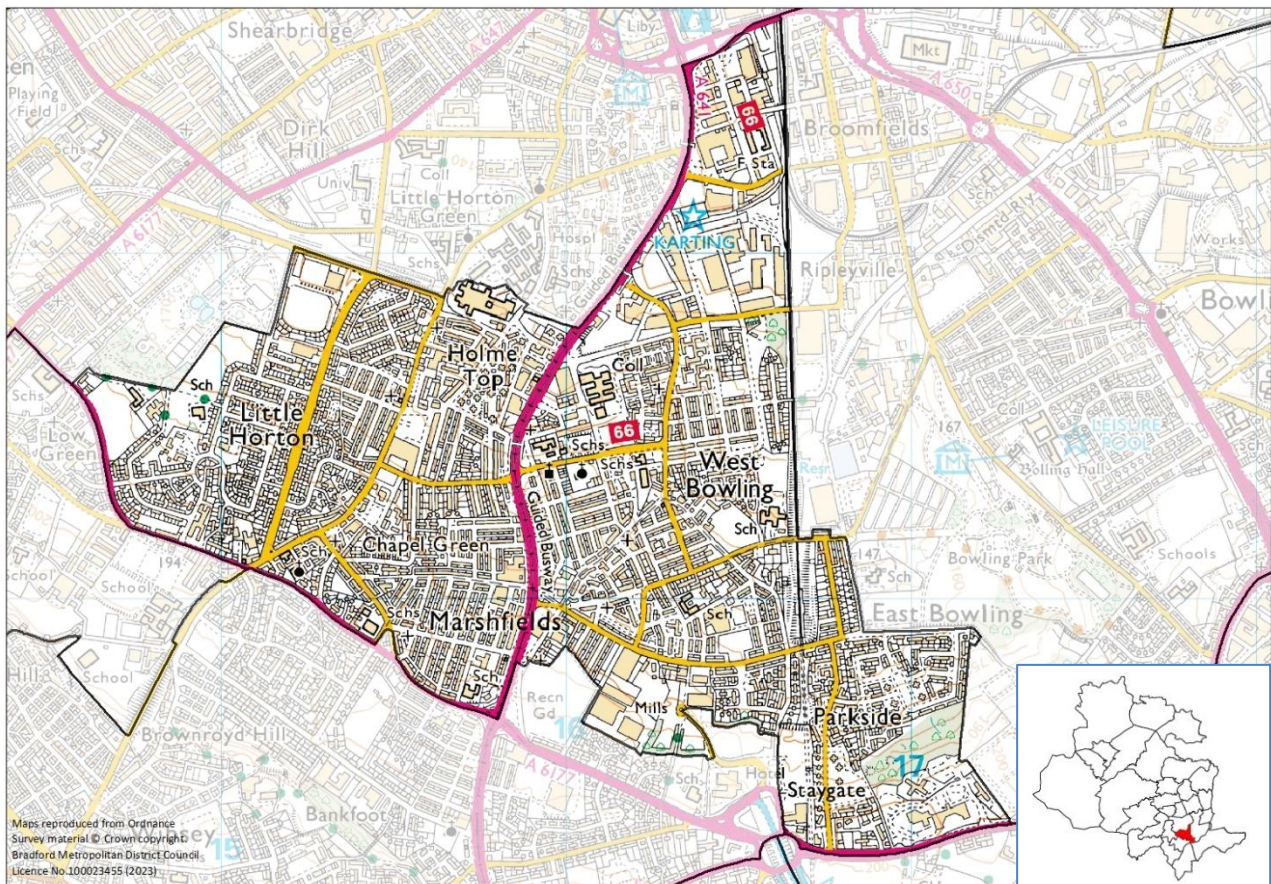
Ward Profile – Little Horton

At a glance:

- Little Horton has a total population of 22,000 people
- 30.3% of the population is under-16 – the highest percentage in the District
- 55.4% of people living in Little Horton identify as Pakistani
- 55.3% of households live in terraced housing
- Life expectancy rates for females living in Little Horton ward are higher than the District average. Life expectancy rates for males are lower than the District average
- 80.6% of residents described their health as very good or good
- Little Horton ward is ranked 2nd of 30 wards in the District for the 2019 Index of Multiple Deprivation where 1 is the most deprived (Manningham ward) and 30 is the least deprived (Wharfedale).

Introduction

Little Horton ward is one of six wards in the Bradford East area. Little Horton ward lies to the south of Bradford City Centre. It includes both industrial and residential development. As well as the area of Little Horton, it also contains the areas of West Bowling, Marshfields and Canterbury.



Population

The mid-2022 population estimates show that 22,000 people live in Little Horton. 30.3% of the population is under 16 – the highest percentage in the District. Craven has the lowest percentage in the District (15.7%).

63.6% of the ward’s population is aged between 16 and 64. Ilkley has the lowest percentage of the working age population with 53.2% and City has the highest percentage with 71.5% - this probably reflects the high numbers of students and young people living in the areas close to Bradford College and Bradford University.

5.8% of the population of Little Horton is aged 65 to 84. City ward has the lowest percentage in the District with 5.4%. Craven and Ilkley wards have the highest percentages with 23.8%.

0.4% of Little Horton’s population is aged 85 and over- the lowest percentage in the District. Ilkley ward has the highest percentage with 6.9%.

Ethnicity and religion

| Ethnicity | Percentage |
|------------------------------|------------|
| White | 22.4% |
| Multiple/mixed ethnic groups | 3.3% |
| Indian | 2.4% |
| Pakistani | 55.4% |
| Bangladeshi | 3.1% |
| Other Asian | 3.3% |
| Black | 5.1% |
| Other ethnic group | 4.9% |

Toller has the lowest percentage of the White population (10.6%) and the highest percentage of the Pakistani population (75.3%). Worth Valley has the highest percentage of the White population (97.3%) and the lowest percentage of the Pakistani population (0.2%).

61.1% of the Bradford District population identified as White, 25.5% identified as Pakistani, 2.7% identified as Mixed, 2.6% identified as Indian, 2.3% identified as Bangladeshi and 2% identified as Black

| Religion | Percentage |
|---------------------|------------|
| Christian | 18.7% |
| Buddhist | 0.1% |
| Hindu | 0.9% |
| Jewish | 0.0% |
| Muslim | 65.7% |
| Sikh | 0.6% |
| Other religion | 0.3% |
| No religion | 8.6% |
| Religion not stated | 5.0% |

The question about religion in the 2021 census was voluntary and 5% of the Little Horton population chose not to answer.

Bradford Moor has the lowest percentage of Christians (8.6%) and Wharfedale has the highest percentage (53.2%). Worth Valley has the lowest

percentage of Muslims (0.3%) and Toller has the highest percentage (80.1%).

Toller has the lowest percentage of people who do not have a religion (4.2%) and Worth Valley has the highest percentage (44.7%).

33.4% of the Bradford District population identified as Christian, 30.5% identified as Muslim. 28.2% of people stated that they had no religion and 5.5% chose not to answer the question, which was voluntary

Household language

52.2% of Little Horton households have adults who all speak English as their main language, 23.3% of households have at least one adult who speaks English, 6.6% have one child aged 3 to 15, but no adults who speak English and 17.9% of households have no one with English as a main language.

83.1% of households in Bradford District have adults who all speak English as their main language, 8.9% have at least one adult who speaks English, 1.8% have at least one child aged 3 to 15, but no adults who speak English and 6.1% of households have no one with English as their main language.

Housing

There are 6,594 households in Little Horton. 55.3% of households live in terraced housing, 28.2% of the households live in semi-detached houses or bungalows, 9.4% live in flats and 5.4% of households live in detached houses or bungalows.

City has the lowest percentages of detached and semi-detached homes Baildon has the lowest percentages of terraced homes. Worth Valley has the lowest percentages of flats.

City has the highest percentages of flats. Wharfedale has the highest percentage of detached properties, Eccleshill has the highest percentage of semi-detached homes and Bradford Moor has the highest percentage of terraced properties.

There are 209,867 households in Bradford District. 36.7% of households live in semi-detached houses or bungalows, 33% live in terraced housing, 14.7% live in detached houses or bungalows and 11.6% live in flats or tenements.

45% of Little Horton households live in owner-occupied housing, 29.1% of households rent from a private landlord and 25.7% are rented from a social landlord.

Wharfedale has the highest percentage of owner-occupiers (83.2%). City has the highest percentage of households renting from private landlords (54.3%) and Tong has the highest percentage of households renting from social landlords (34.7%).

62.2% of Bradford households live in owner-occupied homes (homes (either owned outright, with a mortgage or shared ownership), 23% rent from a private landlord and 14.6% rent from a social landlord.

14.2% of households in Little Horton are living in overcrowded homes, this is lower than the District average of 5.5%. Wharfedale ward had the lowest rate at 0.6% and Manningham had the highest rate at 17.2%

Employment

The top three industries employing people living in Little Horton are: retail and wholesale trade (22.6%), human health and social work activities (13.9%), and manufacturing (10.4%).

22.2% of employees in Little Horton work in elementary occupations, 15.1% are plant, process and machinery operatives and 11.9% work in catering and leisure services.

The top three industries employing people living in Bradford District are: retail and wholesale trade (17.7%), human health and social work activities (15.4%) and education (10.6%)

17.1% of employees in Bradford District work in professional occupations, 12% work in elementary occupations and 11.5% work in associate professional and technical occupations.

Health and disability

The 2021 census asked people about their health, whether they have any disabilities and if they act as unpaid carers for anyone else.

In Little Horton 80.6% described their health as 'Good or very good' and 6.8% described their health as 'Bad or very bad'. Wharfedale had the highest percentage of people who described their health as 'Good or very good' (86.8%). Manningham and Tong wards had the joint highest percentage of people who described their health as 'Bad or very bad' (7.6%).

80.6% of Bradford District residents described their health as 'Good or very good' and 6% described their health as 'Bad or very bad'

The census asked people whether they had any physical or mental health conditions or illnesses lasting or expected to last 12 months or more. It also asked whether any of these conditions or illnesses reduced the respondent's ability to carry out day-to-day activities.

In Little Horton, 85.4% responded that they do not have any illnesses or disabilities which limit their day-to-day activities. 7.9% consider that their activities are limited a lot and 6.7% feel that their activities are limited a little. Wharfedale had the highest percentage of people who do not have any illnesses or disabilities which limit their day-to-day activities (86.5%). Tong has the highest percentage of people who consider that their activities are limited a lot (10%) and Wyke has the highest percentage who feel that their activities are limited a little (11.6%).

82.9% of Bradford District residents do not have any illnesses or disabilities which limit their day to day activities, 8% find their activities are limited a lot and 9.1% find their activities are limited a little.

The Census took place during the coronavirus (Covid 19) pandemic. This may have influenced how people perceived and rated their health and therefore may have affected how people chose to respond.

Unpaid care

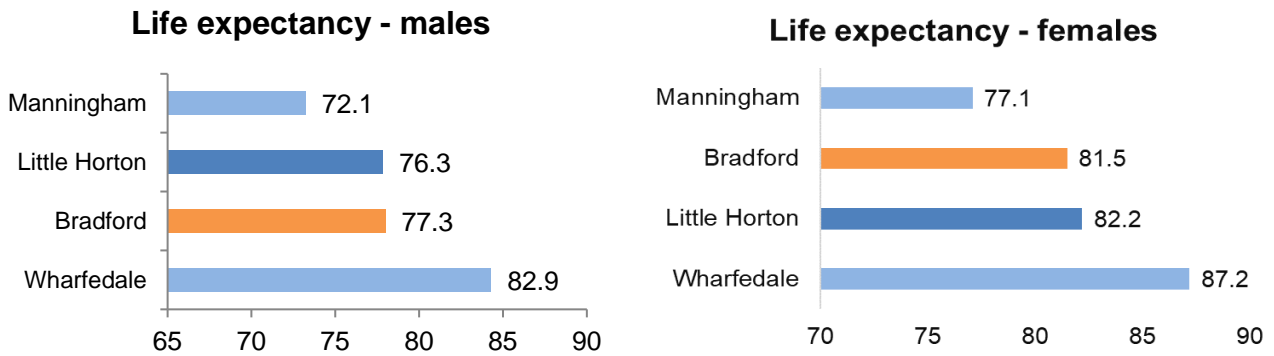
The census asked people whether they look after or give any help or support to anyone with a long-term physical or mental health conditions, or any problems relating to old age.

In Little Horton, 91.9% do not provide any unpaid care, 2.5% provide 19 hours or less per week and 2.9% provided more than 50 hours per week. Residents in City ward were least likely to provide unpaid care (93.1%), whereas at the other end of the scale 5.6% of Baildon residents provide 19 hours or less per week and 3.6% of Wyke residents provide more than 50 hours per week.

91.1% of Bradford District residents do not provide any unpaid care, 3.9% provide 19 hours or less per week and 2.8% provided more than 50 hours per week

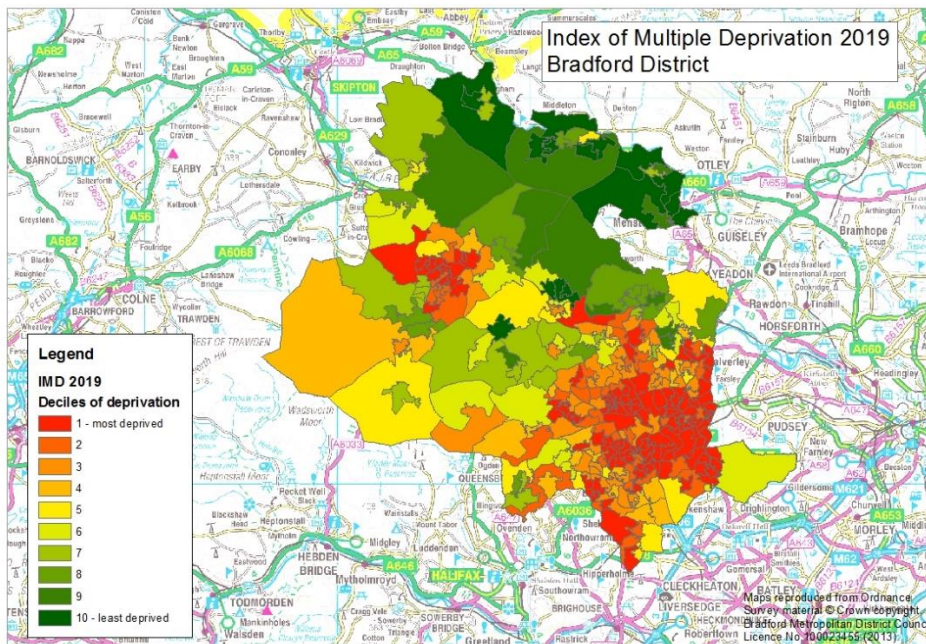
Life expectancy

In 2018-20 life expectancy at birth for both males and females living in Little Horton ward was lower than the District average. Manningham ward had the lowest life expectancy rate for males and females. Wharfedale ward had the highest life expectancy rates for males and females.



Deprivation

The following map shows Lower Super Output Areas (LSOAs) ranked by deciles of deprivation. More deprived neighbourhoods are shown in red and less deprived neighbourhoods are shown in green.



The Indices of Deprivation 2019 were published in September 2019 at district and lower layer super output area. The indices are calculated using 39 separate indicators, organised across seven distinct domains of deprivation (income, employment, education skills and training, health deprivation and disability, crime, barriers to housing and services and living environment) which are weighted and combined to calculate the Index of Multiple Deprivation 2019.

The results have now been aggregated to ward level and this shows that 14 of the District's wards are amongst the 10% most deprived wards in England and one ward is amongst the 10% least deprived wards in England. Manningham is consistently the most deprived ward for most of the indices and Wharfedale is consistently the least deprived ward for most of the indices.

Little Horton is ranked 2nd of 30 wards in the District for the Index of Multiple Deprivation where 1 is the most deprived and 30 is the least deprived. Little Horton is in 2nd place for income deprivation and employment deprivation and 1st place for education, skills and training deprivation.

More about deprivation

The data about deprivation has been aggregated to ward level. Although this data provides a description of the District's wards, this description does not apply to every person who lives there. Many non-deprived people live in deprived areas, and many deprived people live in non-deprived areas.

Data sources and further information

Source: 2021 Census, Mid-year population estimates, Indices of Deprivation 2019

Link: www.ons.gov.uk www.nomisweb.co.uk

For more information about population and deprivation at ward level see:

<https://ubd.bradford.gov.uk/>

Contact: Catriona Colborn

Email: catriona.colborn@bradford.gov.uk

Office of the Chief Executive,

City of Bradford Metropolitan District Council,

2nd Floor Britannia House, Bradford BD1 1HX

ubd.bradford.gov.uk

Unless marked otherwise, you are free to use the content of this bulletin in your own work as long as you quote the source.

The wording in this publication can be made available in other formats such as large print.

