



# Indices of Deprivation 2025

## At a glance

- Bradford is the 12<sup>th</sup> most deprived local authority in England
- Bradford's position has worsened by one place since IMD 2019
- Bradford is the 4<sup>th</sup> most income deprived and 5<sup>th</sup> most employment deprived local authority in England (both one place worse since IMD 2019)
- More than one-third (37%) of Bradford's 312 neighbourhoods fall within the 10% most deprived in England (3% more than IMD 2019)

## Introduction

The latest edition of the English Indices of Deprivation was published by the Ministry of Housing, Communities and Local Government on 30 October 2025. The Indices measure relative levels of deprivation in the 33,755 Lower-layer Super Output Areas (LSOAs) or neighbourhoods in England. Bradford has 312 LSOAs.

## How the index of multiple deprivation (IMD) is calculated

The Index of Multiple Deprivation is an overall measure of deprivation and uses 55 separate indicators organised across seven distinct domains of deprivation (income, employment, education skills and training, health deprivation and disability, crime, barriers to housing and services and living environment) which are combined and weighted.

## What this means for Bradford

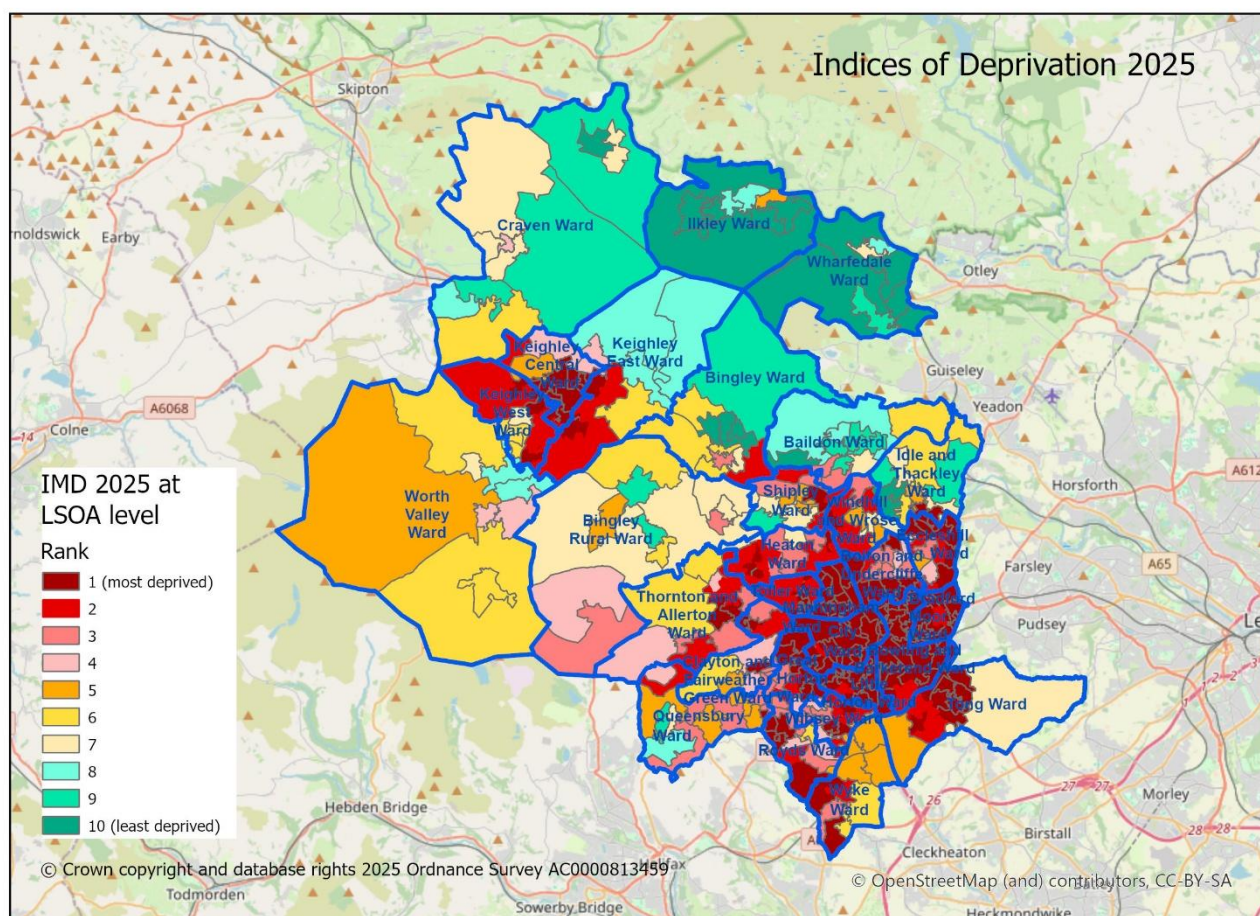
Bradford ranks the 12<sup>th</sup> most deprived local authority in England (where 1 is the most deprived local authority and 296 is the least deprived) and 2<sup>nd</sup> most deprived in the Yorkshire and Humber region (after Kingston Upon Hull).

Bradford's position, relative to other local authorities has worsened in the last six years. In 2019 Bradford was ranked as 13<sup>th</sup> most deprived and in 2015 Bradford was ranked 19<sup>th</sup> most deprived.

Bradford is ranked the 4<sup>th</sup> most income deprived local authority in terms of Rank of Income Scale in England. This measures the actual number of people experiencing income deprivation. This is one place worse than in 2019 and 2015.

Bradford is ranked the 5<sup>th</sup> most employment deprived local authority in terms of Rank of Employment Scale in England. This measures the actual number of people experiencing employment deprivation. This is one place worse than in 2019 and 2015.

Bradford has 115 LSOAs (an additional eleven since 2019) which fall within the 10% most deprived neighbourhoods in England and the 18 LSOAs which fall within the least deprived neighbourhoods (an additional two since 2019).



## Technical note

The Indices of Deprivation measure deprivation on a relative rather than an absolute scale, so a neighbourhood ranked 100<sup>th</sup> is more deprived than a neighbourhood ranked 200<sup>th</sup>, but this does not mean it is twice as deprived.

The number of LSOAs in Bradford increased from 310 to 312 in 2021.

## Data sources and further information

A more detailed briefing will follow this 'intelligence alert' by 10<sup>th</sup> November 2025

Source: Ministry of Housing, Communities & Local Government

Link: <https://www.gov.uk/government/statistics/english-indices-of-deprivation-2025>

Contact: Catriona Colborn  
Email: [catriona.colborn@bradford.gov.uk](mailto:catriona.colborn@bradford.gov.uk)  
**Office of the Chief Executive,**  
City of Bradford Metropolitan District Council,  
1<sup>st</sup> Floor, Britannia House, Bradford  
[ubd.bradford.gov.uk](http://ubd.bradford.gov.uk)



The wording in this publication can be made available in other formats such as large print. Please call 01274 43469.